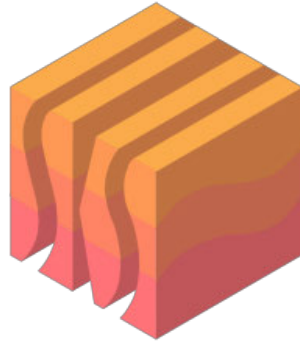


DEMO STOCKPILE VOLUME REPORT

Report done by PT. SURYA KWON SUNG



For

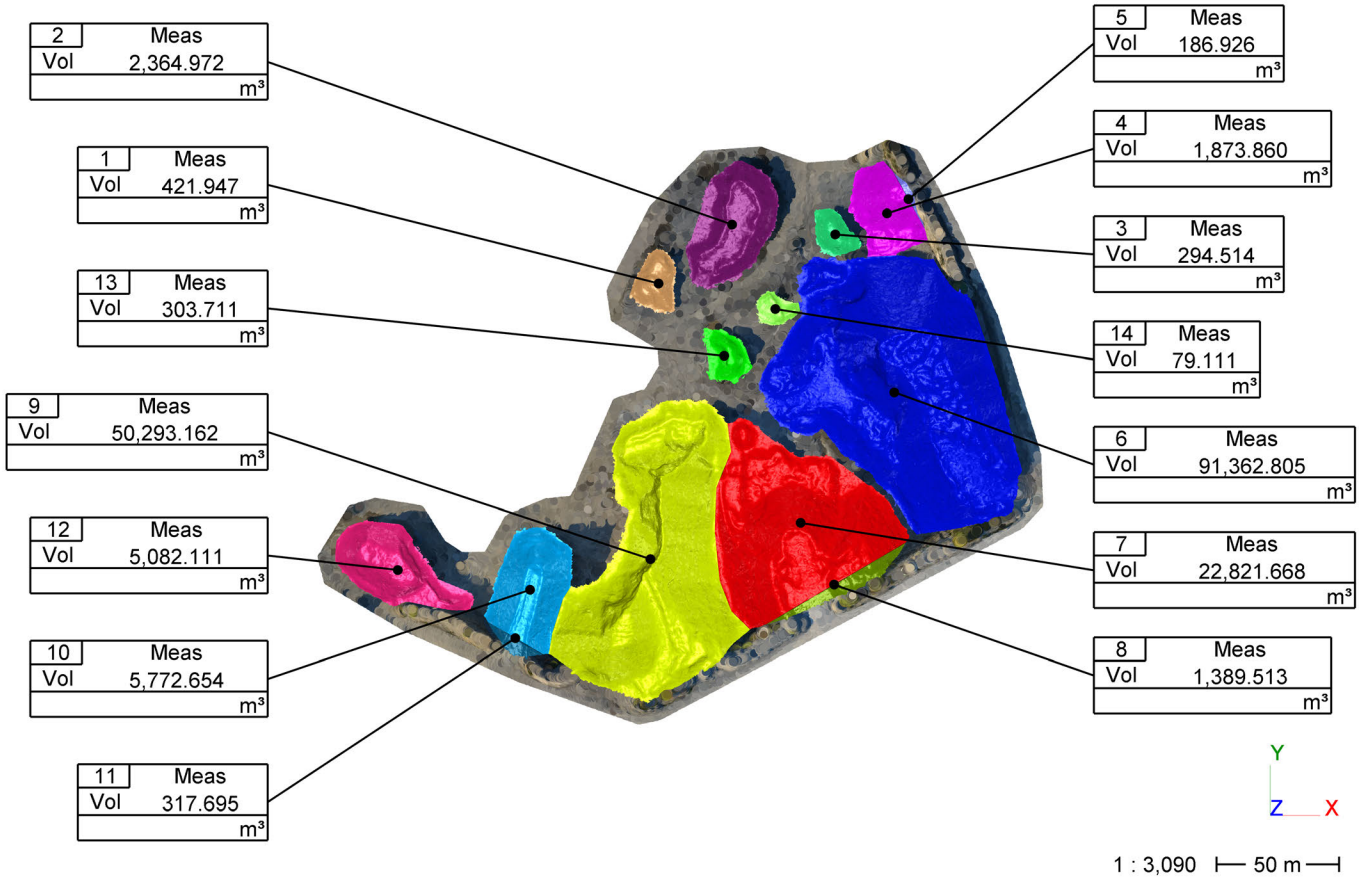
DEMO

7/20/2024

Website: www.3dscanindonesia.co.id
Tel & WhatsApp: +6287876772196
Email: stephen@3dscanindonesia.co.id



DEMO STOCKPILE



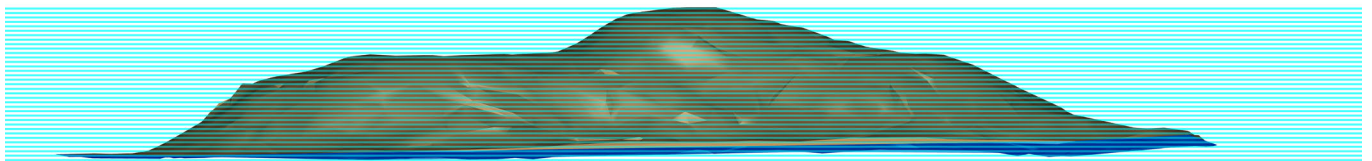


Number	Color	Stockpile name	Material name	Material nature	Grain-size	2D Perimeter (m)	2D Area (m ²)	3D Area (m ²)	Cut volume (m ³)	Fill volume (m ³)	Total volume (m ³)
1		1	10001	Gravel	4/6	77.725	408.693	449.581	421.95	1.81	420.13
2		2	10001	Gravel	4/6	145.082	1,444.009	1,578.941	2,364.97	1.73	2,363.25
3		3	10002	Gravel	4/6	67.847	285.866	319.290	294.51	0.77	293.74
4		4a	10003	Gravel	4/10	119.393	844.997	1,138.729	1,873.86	21.43	1,852.43
5		4b	10003	Gravel	4/10	79.480	88.569	280.669	186.93	0.21	186.72
6		5	20001	Stone	100/200	366.206	8,265.594	9,885.050	91,362.81	1.12	91,361.69
7		6a	20002	Stone	0/150	265.069	4,207.154	5,379.274	22,821.67	1.67	22,820.00
8		6b	20002	Stone	0/150	153.465	352.876	1,078.870	1,389.51	0.03	1,389.48
9		7	20003	Stone	0/80	352.493	6,110.578	7,819.850	50,293.16	0.39	50,292.77
10		8a	10004	Gravel	0/31.5	145.077	1,292.141	1,672.238	5,772.65	0.00	5,772.65
11		8b	10004	Gravel	0/31.5	66.528	139.739	303.717	317.70	0.77	316.93
12		9	10005	Gravel	4/10	154.067	1,302.092	1,577.414	5,082.11	0.17	5,081.95
13		10	00001	Sand	0/2	74.465	367.802	413.996	303.71	1.18	302.53
14		11	00002	Sand	0/4	55.248	209.608	223.403	79.11	2.75	76.36

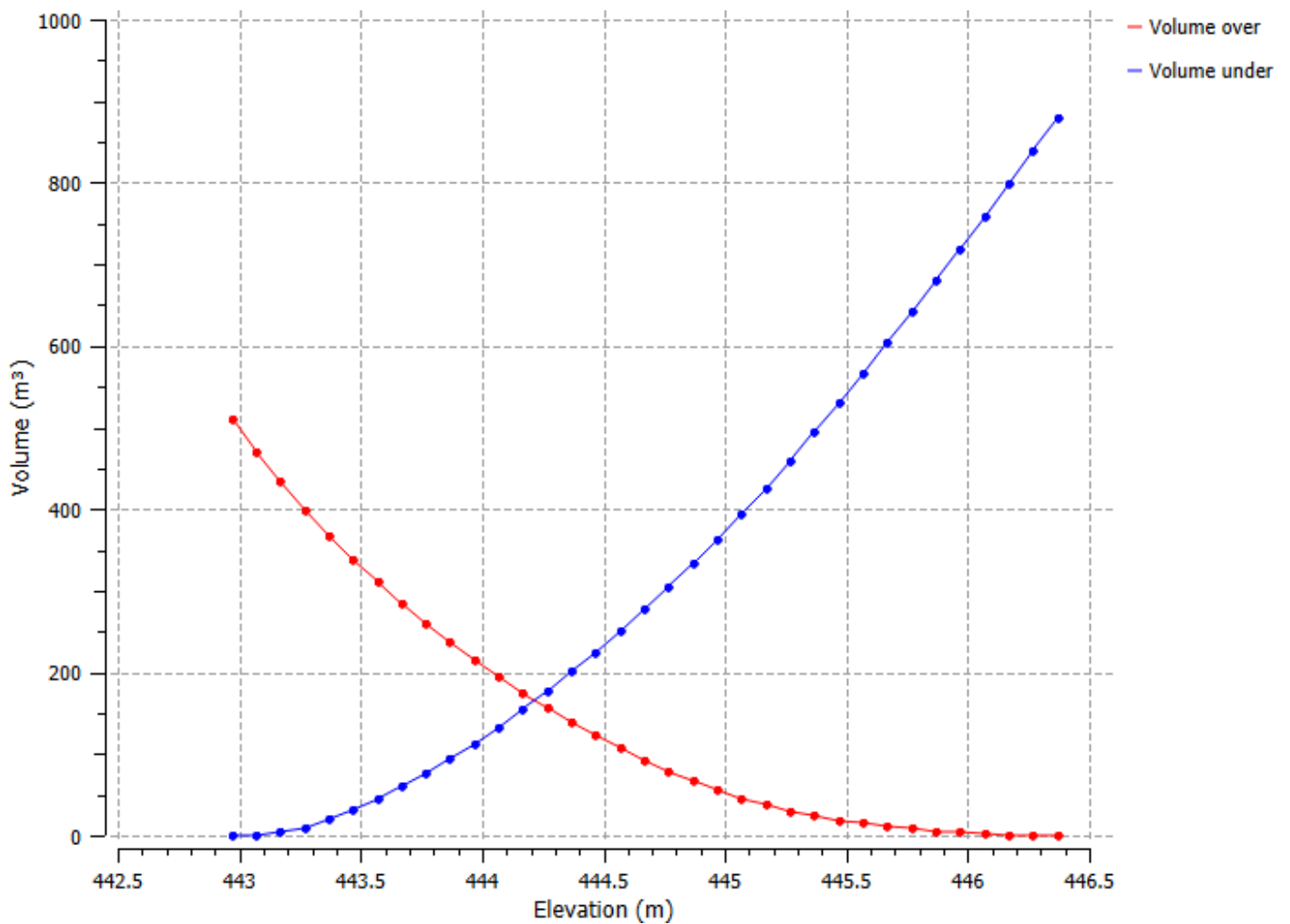


Volume from Elevation 1

Direction: X= 0 m ; Y= 0 m ; Z= 1 m



1 : 170 | 3 m



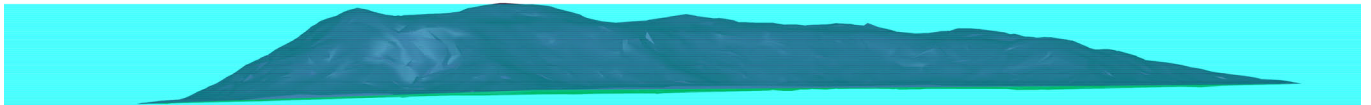


Elevation (m)	Volume over (m³)	Volume under (m³)
442.970	511.04	0.00
443.070	470.64	0.47
443.170	433.02	3.73
443.270	398.40	9.98
443.370	366.66	19.10
443.470	337.42	30.74
443.570	310.05	44.23
443.670	284.32	59.37
443.770	260.05	75.97
443.870	237.03	93.82
443.970	215.21	112.86
444.070	194.58	133.10
444.170	175.06	154.45
444.270	156.60	176.86
444.370	139.15	200.28
444.470	122.70	224.70
444.570	107.25	250.13
444.670	92.83	276.57
444.770	79.40	304.02
444.870	67.04	332.52
444.970	55.85	362.20
445.070	45.84	393.06
445.170	37.00	425.09
445.270	29.45	458.40
445.370	23.57	493.40
445.470	18.80	529.50
445.570	14.64	566.21
445.670	11.06	603.50
445.770	8.04	641.34
445.870	5.49	679.66
445.970	3.43	718.47
446.070	1.90	757.82
446.170	0.90	797.68
446.270	0.25	837.90
446.370	0.01	878.53

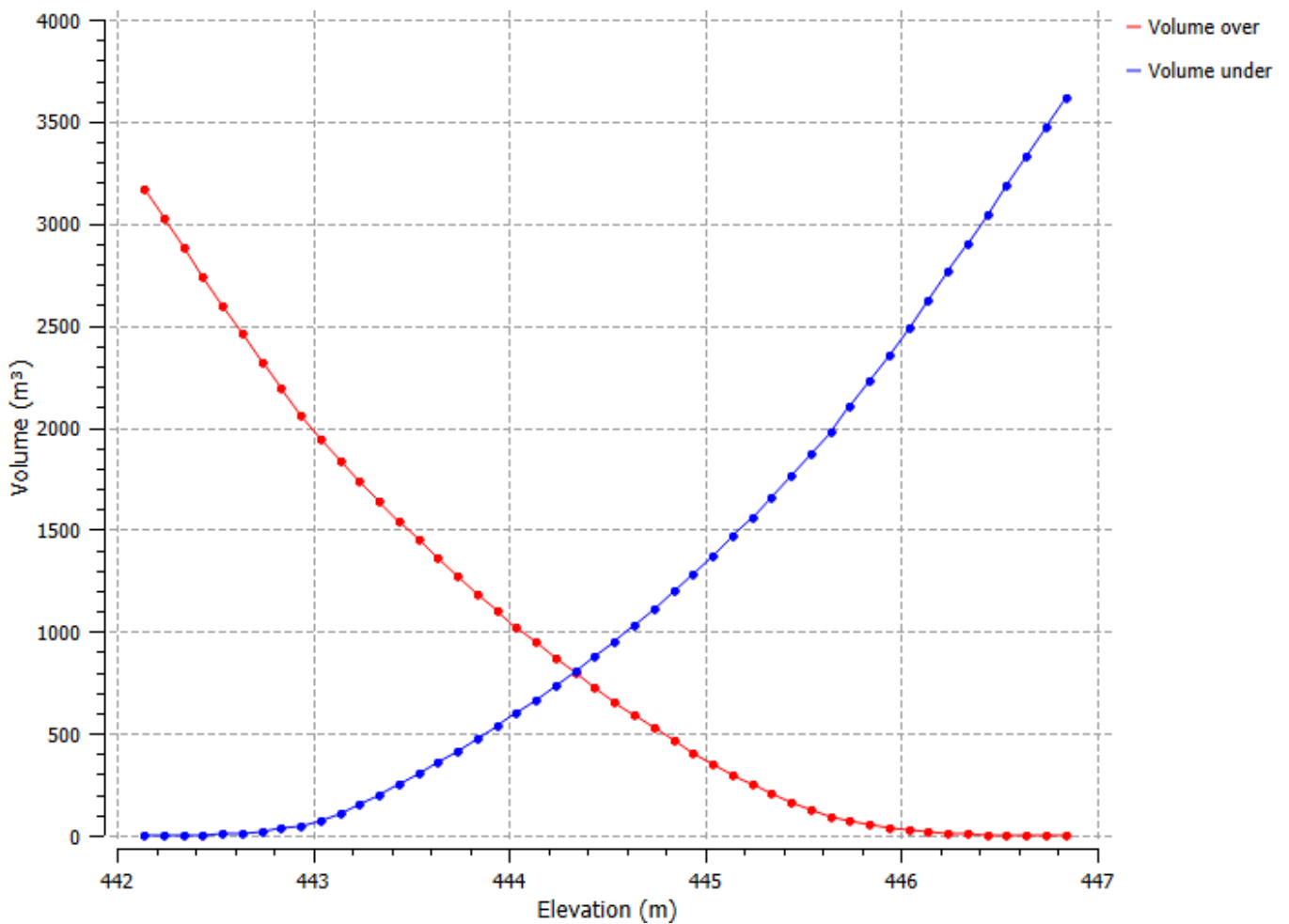


Volume from Elevation 2

Direction: X= 0 m ; Y= 0 m ; Z= 1 m



1 : 360 | 5 m





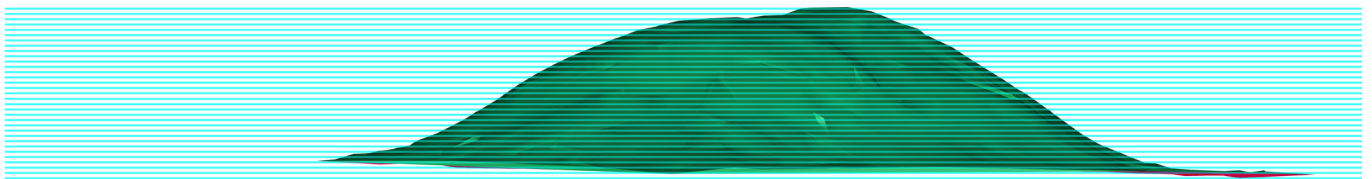
Elevation (m)	Volume over (m ³)	Volume under (m ³)
442.140	3,167.66	0.00
442.240	3,023.44	0.18
442.340	2,880.02	1.17
442.440	2,737.93	3.48
442.540	2,597.21	7.15
442.640	2,458.24	12.58
442.740	2,322.05	20.79
442.840	2,188.73	31.88
442.940	2,060.59	48.13
443.040	1,942.76	74.71
443.140	1,835.30	111.65
443.240	1,732.80	153.55
443.340	1,634.26	199.41
443.440	1,539.00	248.55
443.540	1,446.68	300.63
443.640	1,357.04	355.40
443.740	1,269.88	412.64
443.840	1,185.13	472.28
443.940	1,102.78	534.33
444.040	1,022.67	598.63
444.140	944.74	665.10
444.240	869.02	733.78
444.340	795.35	804.51
444.440	723.71	877.27
444.540	654.69	952.66
444.640	588.73	1,031.09
444.740	525.58	1,112.34
444.840	465.01	1,196.18
444.940	406.92	1,282.49
445.040	351.48	1,371.45
445.140	298.84	1,463.21
445.240	249.57	1,558.34
445.340	204.02	1,657.19
445.440	162.45	1,760.02
445.540	125.43	1,867.40

Elevation (m)	Volume over (m ³)	Volume under (m ³)
445.640	93.83	1,980.20
445.740	69.98	2,100.75
445.840	51.49	2,226.66
445.940	36.83	2,356.40
446.040	25.46	2,489.44
446.140	16.85	2,625.23
446.240	10.57	2,763.35
446.340	6.46	2,903.64
446.440	4.01	3,045.59
446.540	2.37	3,188.35
446.640	1.24	3,331.62
446.740	0.51	3,475.29
446.840	0.09	3,619.28

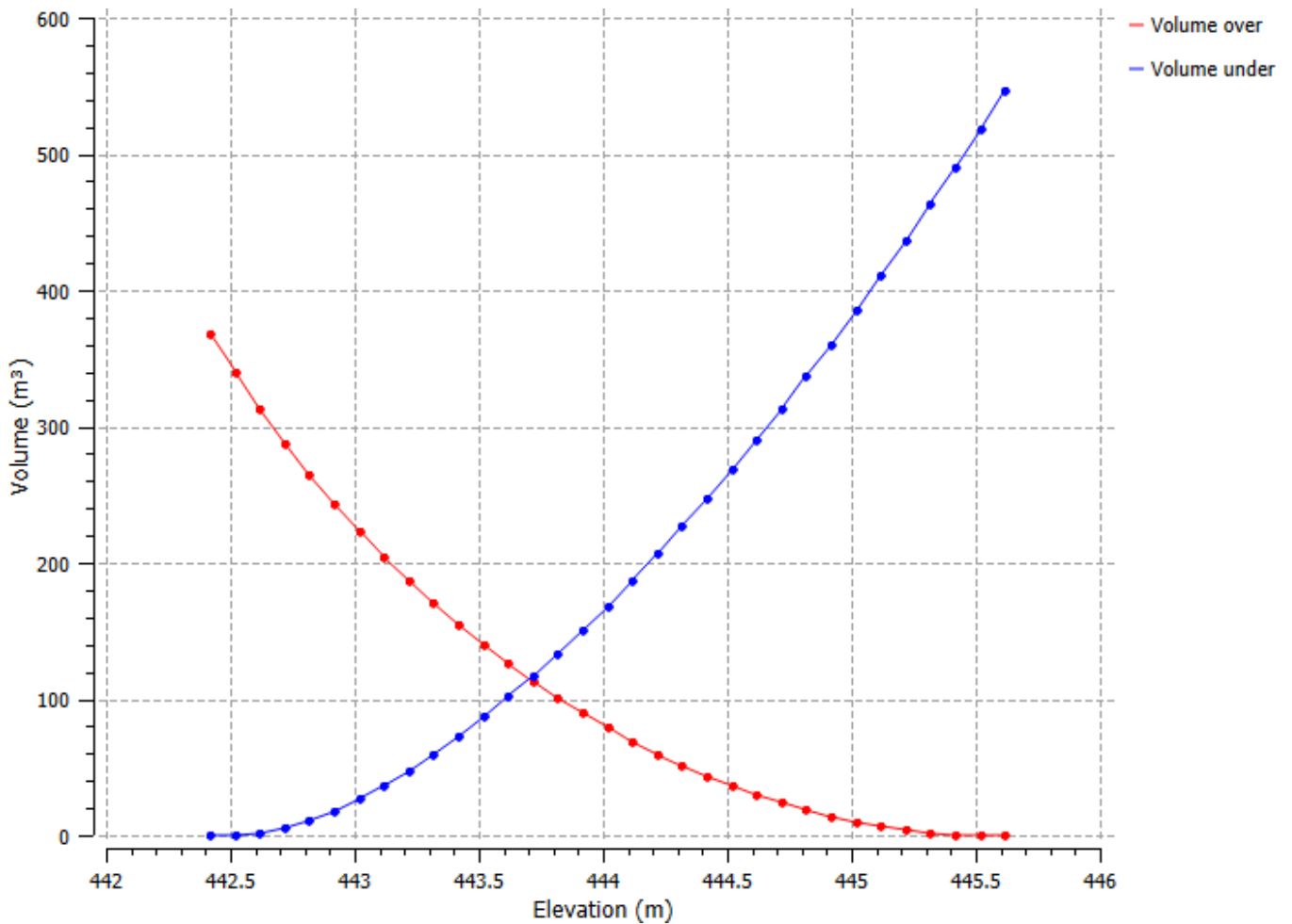


Volume from Elevation 3

Direction: X= 0 m ; Y= 0 m ; Z= 1 m



1 : 143 | 2 m |



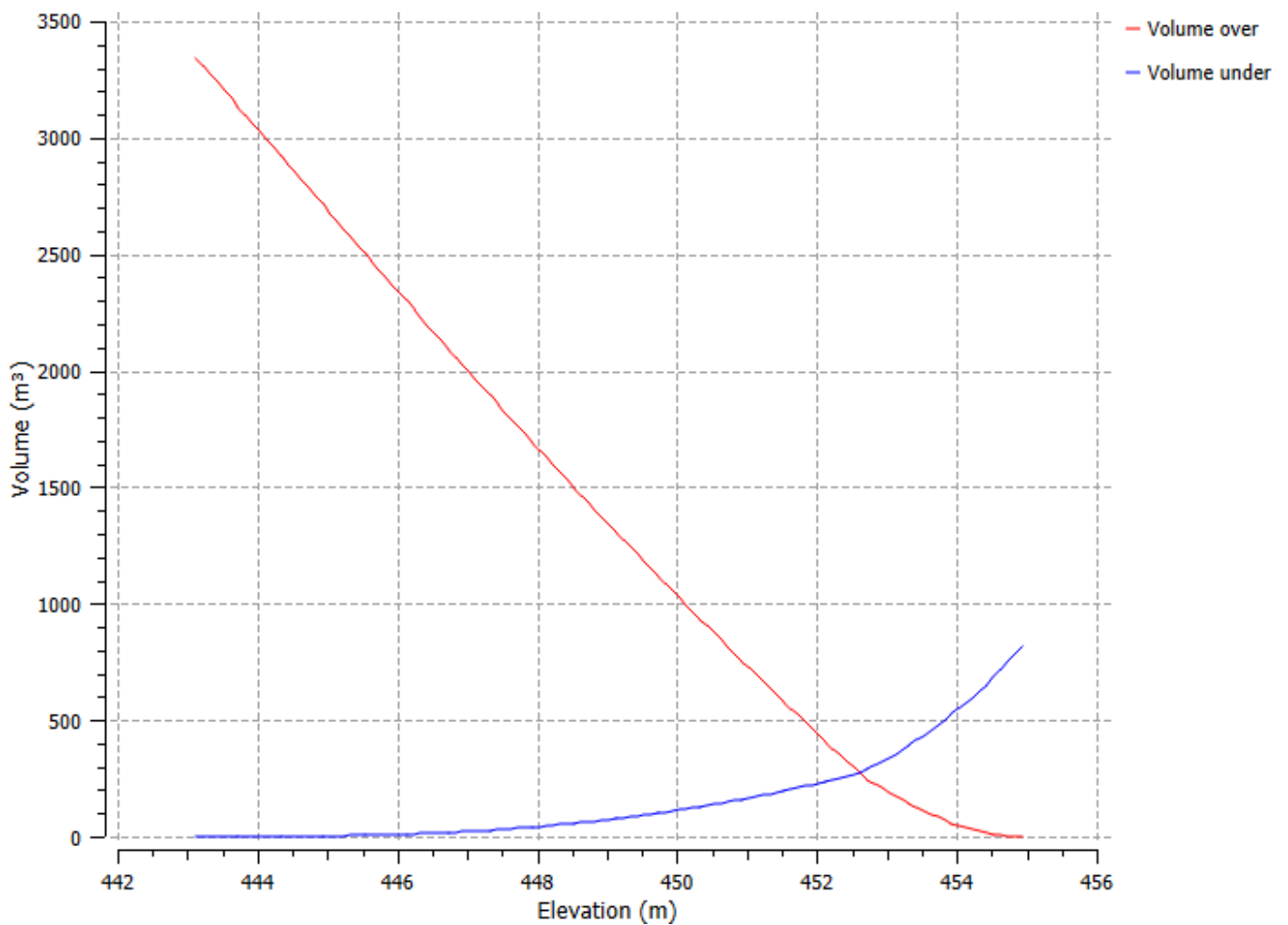


Elevation (m)	Volume over (m ³)	Volume under (m ³)
442.420	367.85	0.00
442.520	339.45	0.19
442.620	312.38	1.71
442.720	287.22	5.13
442.820	264.00	10.50
442.920	242.52	17.60
443.020	222.64	26.31
443.120	204.10	36.35
443.220	186.62	47.46
443.320	170.17	59.60
443.420	154.71	72.72
443.520	140.11	86.71
443.620	126.28	101.47
443.720	113.24	117.01
443.820	100.97	133.33
443.920	89.47	150.42
444.020	78.76	168.29
444.120	68.81	186.93
444.220	59.59	206.30
444.320	51.06	226.36
444.420	43.22	247.10
444.520	36.03	268.50
444.620	29.46	290.51
444.720	23.51	313.15
444.820	18.21	336.44
444.920	13.53	360.34
445.020	9.49	384.89
445.120	6.10	410.09
445.220	3.48	436.05
445.320	1.64	462.81
445.420	0.57	490.32
445.520	0.14	518.48
445.620	0.01	546.93



Volume from Elevation 4a

Direction: X= 0 m ; Y= 0 m ; Z= 1 m





Elevation (m)	Volume over (m³)	Volume under (m³)
443.130	3,347.07	0.00
443.230	3,311.79	0.00
443.330	3,276.51	0.01
443.430	3,241.23	0.02
443.530	3,205.97	0.05
443.630	3,170.71	0.08
443.730	3,135.47	0.12
443.830	3,100.24	0.18
443.930	3,065.03	0.26
444.030	3,029.83	0.35
444.130	2,994.65	0.46
444.230	2,959.49	0.58
444.330	2,924.35	0.72
444.430	2,889.22	0.89
444.530	2,854.13	1.08
444.630	2,819.07	1.31
444.730	2,784.04	1.57
444.830	2,749.05	1.86
444.930	2,714.09	2.20
445.030	2,679.18	2.57
445.130	2,644.32	3.00
445.230	2,609.50	3.47
445.330	2,574.73	3.98
445.430	2,540.00	4.55
445.530	2,505.31	5.14
445.630	2,470.67	5.79
445.730	2,436.09	6.50
445.830	2,401.57	7.26
445.930	2,367.12	8.10
446.030	2,332.74	9.01
446.130	2,298.44	9.99
446.230	2,264.20	11.04
446.330	2,230.03	12.16
446.430	2,195.93	13.35
446.530	2,161.90	14.61

Elevation (m)	Volume over (m³)	Volume under (m³)
446.630	2,127.94	15.93
446.730	2,094.04	17.32
446.830	2,060.21	18.78
446.930	2,026.46	20.31
447.030	1,992.79	21.93
447.130	1,959.20	23.63
447.230	1,925.70	25.42
447.330	1,892.29	27.30
447.430	1,858.98	29.27
447.530	1,825.74	31.32
447.630	1,792.59	33.46
447.730	1,759.53	35.69
447.830	1,726.56	38.01
447.930	1,693.71	40.44
448.030	1,660.95	42.96
448.130	1,628.29	45.59
448.230	1,595.72	48.31
448.330	1,563.25	51.13
448.430	1,530.86	54.03
448.530	1,498.55	57.01
448.630	1,466.35	60.09
448.730	1,434.25	63.28
448.830	1,402.24	66.55
448.930	1,370.31	69.92
449.030	1,338.48	73.37
449.130	1,306.75	76.93
449.230	1,275.14	80.61
449.330	1,243.64	84.40
449.430	1,212.25	88.29
449.530	1,180.97	92.31
449.630	1,149.82	96.44
449.730	1,118.78	100.68
449.830	1,087.85	105.04
449.930	1,057.05	109.53
450.030	1,026.37	114.13

Elevation (m)	Volume over (m³)	Volume under (m³)
450.130	995.80	118.85
450.230	965.34	123.68
450.330	934.98	128.61
450.430	904.73	133.65
450.530	874.59	138.79
450.630	844.55	144.04
450.730	814.62	149.40
450.830	784.79	154.86
450.930	755.07	160.43
451.030	725.46	166.10
451.130	695.96	171.89
451.230	666.56	177.78
451.330	637.27	183.78
451.430	608.10	189.89
451.530	579.03	196.11
451.630	550.08	202.45
451.730	521.26	208.92
451.830	492.58	215.53
451.930	464.06	222.29
452.030	435.72	229.24
452.130	407.54	236.35
452.230	379.52	243.61
452.330	351.67	251.05
452.430	324.03	258.71
452.530	296.68	266.64
452.630	270.43	275.68
452.730	246.31	286.84
452.830	226.37	302.19
452.930	208.55	319.65
453.030	191.20	337.59
453.130	174.31	356.00
453.230	157.95	374.92
453.330	142.08	394.34
453.430	126.67	414.21
453.530	111.71	434.54

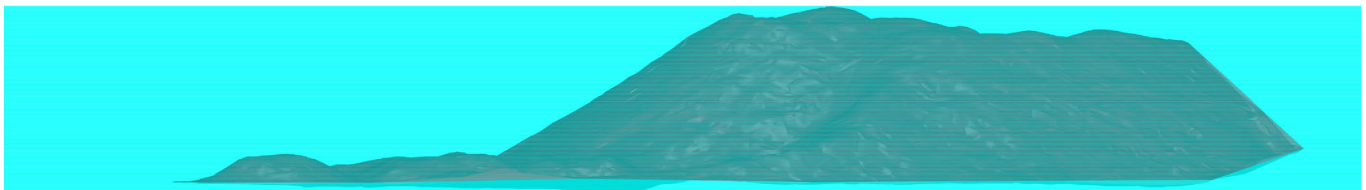


Elevation (m)	Volume over (m³)	Volume under (m³)
453.630	97.23	455.35
453.730	83.27	476.68
453.830	70.06	498.76
453.930	57.90	521.88
454.030	46.81	546.08
454.130	36.66	571.22
454.230	27.65	597.50
454.330	19.81	624.95
454.430	13.20	653.62
454.530	8.17	683.88
454.630	4.72	715.72
454.730	2.35	748.63
454.830	0.77	782.34
454.930	0.04	816.90

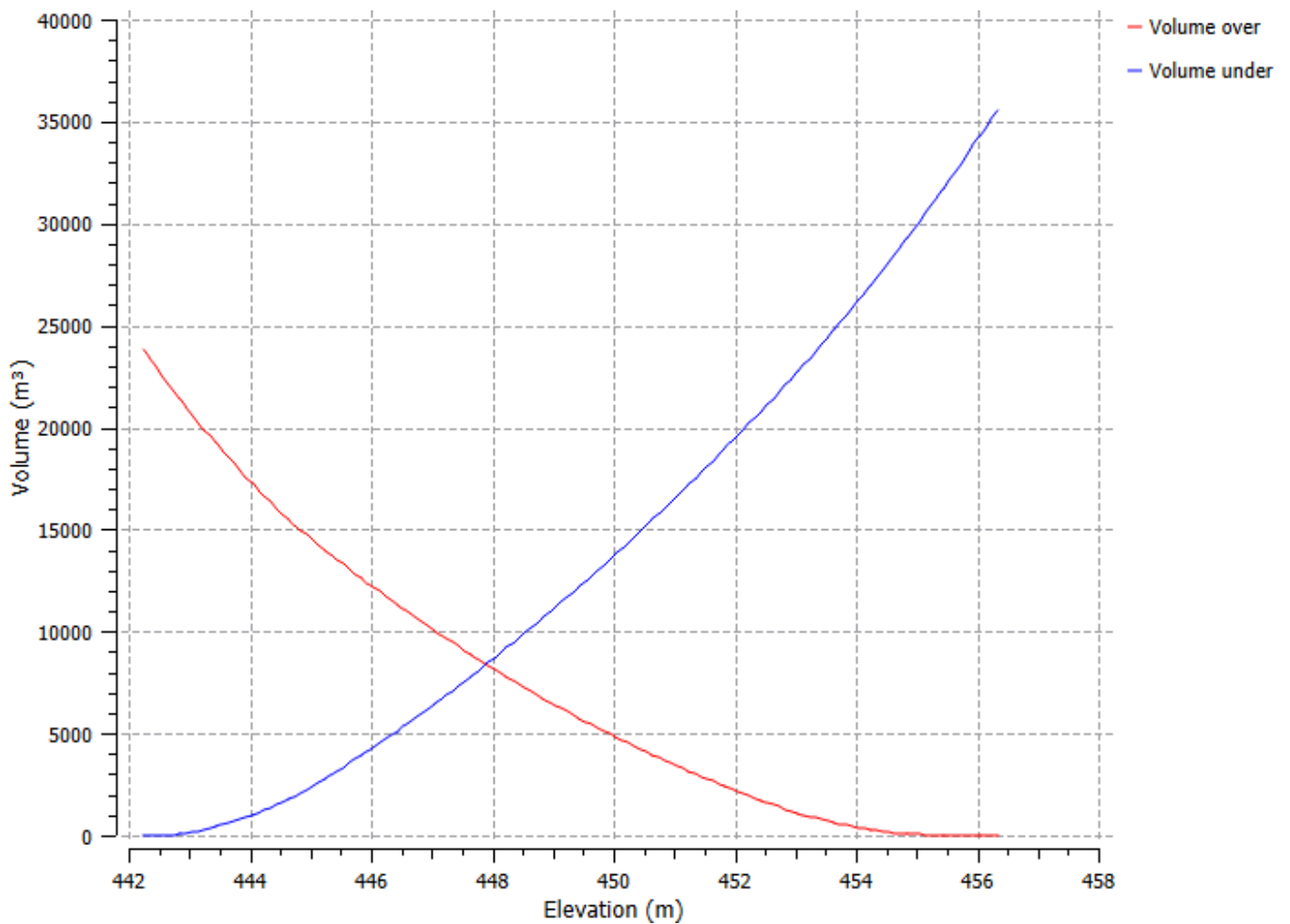


Volume from Elevation 4b

Direction: X= 0 m ; Y= 0 m ; Z= 1 m



1 : 580 | 10 m |





Elevation (m)	Volume over (m³)	Volume under (m³)
442.240	23,829.71	0.00
442.340	23,409.26	0.26
442.440	22,989.36	1.08
442.540	22,570.52	2.95
442.640	22,155.66	8.81
442.740	21,752.70	26.57
442.840	21,364.57	59.15
442.940	20,988.86	104.16
443.040	20,621.95	157.96
443.140	20,261.44	218.17
443.240	19,907.29	284.73
443.340	19,558.97	357.13
443.440	19,215.91	434.78
443.540	18,877.66	517.24
443.640	18,544.14	604.44
443.740	18,215.38	696.39
443.840	17,891.21	792.94
443.940	17,571.44	893.89
444.040	17,256.04	999.20
444.140	16,945.33	1,109.21
444.240	16,640.46	1,225.05
444.340	16,342.28	1,347.59
444.440	16,050.77	1,476.79
444.540	15,766.60	1,613.34
444.640	15,491.29	1,758.74
444.740	15,226.15	1,914.33
444.840	14,970.49	2,079.38
444.940	14,721.64	2,251.25
445.040	14,477.30	2,427.62
445.140	14,236.27	2,607.31
445.240	13,997.74	2,789.49
445.340	13,761.48	2,973.94
445.440	13,527.41	3,160.59
445.540	13,295.53	3,349.43
445.640	13,065.81	3,540.42

Elevation (m)	Volume over (m³)	Volume under (m³)
445.740	12,838.21	3,733.54
445.840	12,612.62	3,928.66
445.940	12,389.04	4,125.80
446.040	12,167.48	4,324.96
446.140	11,947.91	4,526.09
446.240	11,730.28	4,729.18
446.340	11,514.62	4,934.24
446.440	11,300.91	5,141.24
446.540	11,089.16	5,350.21
446.640	10,879.36	5,561.13
446.740	10,671.47	5,773.95
446.840	10,465.49	5,988.68
446.940	10,261.35	6,205.26
447.040	10,059.02	6,423.64
447.140	9,858.50	6,643.84
447.240	9,659.73	6,865.79
447.340	9,462.72	7,089.49
447.440	9,267.45	7,314.94
447.540	9,073.94	7,542.14
447.640	8,882.19	7,771.11
447.740	8,692.23	8,001.86
447.840	8,504.05	8,234.40
447.940	8,317.68	8,468.74
448.040	8,133.10	8,704.88
448.140	7,950.40	8,942.89
448.240	7,769.64	9,182.85
448.340	7,590.76	9,424.69
448.440	7,413.73	9,668.37
448.540	7,238.46	9,913.81
448.640	7,064.88	10,160.95
448.740	6,892.97	10,409.75
448.840	6,722.78	10,660.28
448.940	6,554.36	10,912.58
449.040	6,387.74	11,166.68
449.140	6,222.92	11,422.57

Elevation (m)	Volume over (m³)	Volume under (m³)
449.240	6,059.92	11,680.29
449.340	5,898.67	11,939.75
449.440	5,739.17	12,200.97
449.540	5,581.43	12,463.94
449.640	5,425.40	12,728.62
449.740	5,270.99	12,994.93
449.840	5,118.21	13,262.87
449.940	4,967.08	13,532.46
450.040	4,817.63	13,803.72
450.140	4,669.85	14,076.66
450.240	4,523.76	14,351.27
450.340	4,379.34	14,627.57
450.440	4,236.56	14,905.51
450.540	4,095.44	15,185.11
450.640	3,955.97	15,466.35
450.740	3,818.12	15,749.22
450.840	3,681.89	16,033.70
450.940	3,547.26	16,319.79
451.040	3,414.23	16,607.48
451.140	3,282.77	16,896.73
451.240	3,152.88	17,187.55
451.340	3,024.58	17,479.96
451.440	2,897.86	17,773.96
451.540	2,772.69	18,069.51
451.640	2,649.09	18,366.63
451.740	2,527.03	18,665.28
451.840	2,406.52	18,965.48
451.940	2,287.56	19,267.24
452.040	2,170.14	19,570.53
452.140	2,054.27	19,875.38
452.240	1,939.95	20,181.78
452.340	1,827.16	20,489.70
452.440	1,715.85	20,799.10
452.540	1,606.10	21,110.08
452.640	1,498.37	21,423.06



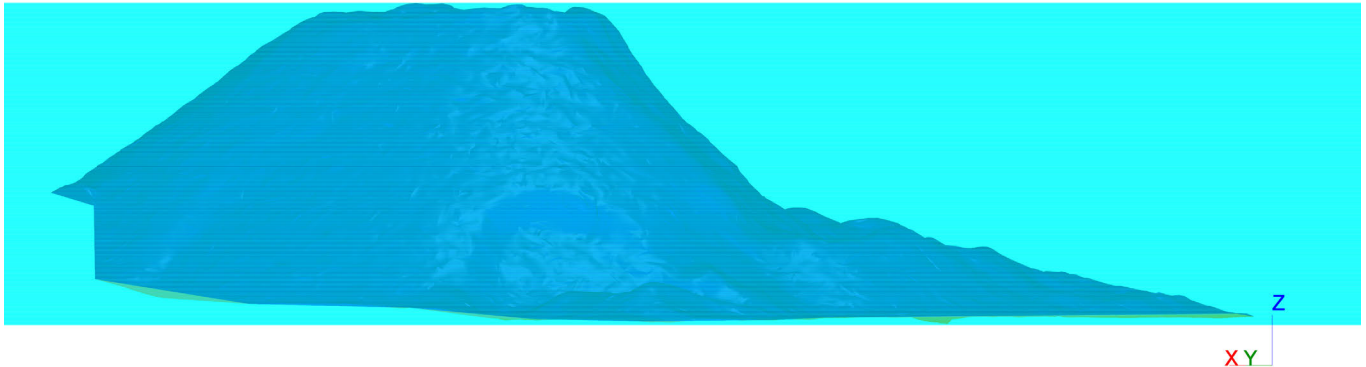
Elevation (m)	Volume over (m³)	Volume under (m³)
452.740	1,394.04	21,739.45
452.840	1,295.36	22,061.47
452.940	1,201.25	22,388.09
453.040	1,110.68	22,718.22
453.140	1,023.24	23,051.50
453.240	939.01	23,387.99
453.340	858.04	23,727.73
453.440	780.26	24,070.67
453.540	705.52	24,416.64
453.640	633.90	24,765.75
453.740	565.71	25,118.27
453.840	501.36	25,474.63
453.940	440.95	25,834.94
454.040	384.39	26,199.09
454.140	331.64	26,567.06
454.240	282.90	26,939.03
454.340	238.52	27,315.37
454.440	198.46	27,696.02
454.540	162.68	28,080.96
454.640	131.14	28,470.14
454.740	103.72	28,863.43
454.840	80.69	29,261.11
454.940	62.01	29,663.15
455.040	46.64	30,068.50
455.140	34.18	30,476.75
455.240	24.65	30,887.94
455.340	17.36	31,301.36
455.440	12.18	31,716.90
455.540	8.69	32,134.12
455.640	6.24	32,552.39
455.740	4.32	32,971.18
455.840	2.88	33,390.46
455.940	1.79	33,810.09
456.040	0.99	34,230.00
456.140	0.44	34,650.16

Elevation (m)	Volume over (m³)	Volume under (m³)
456.240	0.11	35,070.55
456.340	0.00	35,491.16

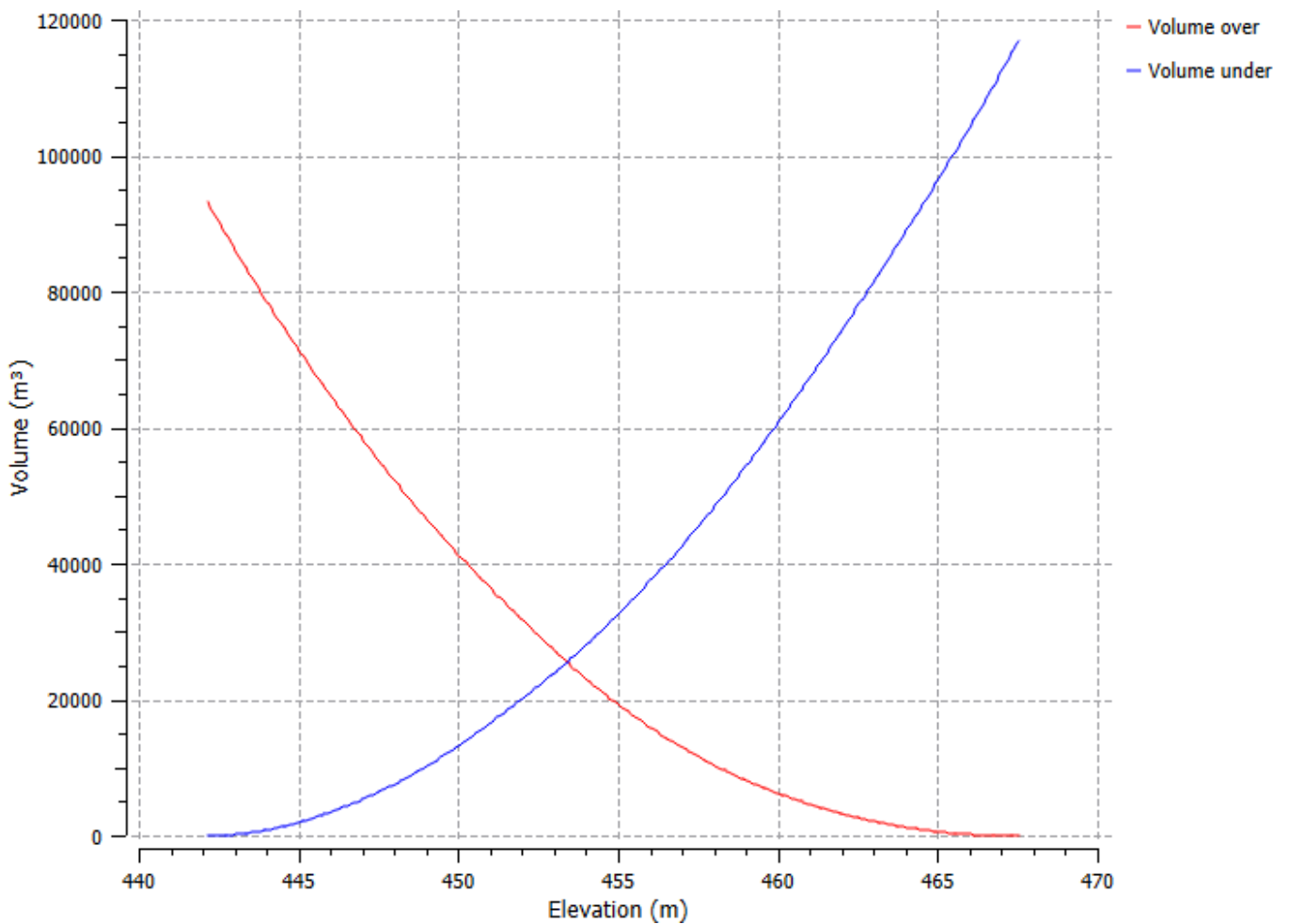


Volume from Elevation 5

Direction: X= 0 m ; Y= 0 m ; Z= 1 m



1 : 600 | 12 m





Elevation (m)	Volume over (m³)	Volume under (m³)
442.140	93,180.12	0.00
442.240	92,353.65	0.09
442.340	91,527.83	0.83
442.440	90,703.34	2.90
442.540	89,882.04	8.16
442.640	89,066.81	19.49
442.740	88,257.52	36.76
442.840	87,456.11	61.91
442.940	86,662.23	94.59
443.040	85,876.22	135.14
443.140	85,096.81	182.29
443.240	84,322.81	234.85
443.340	83,553.78	292.38
443.440	82,789.07	354.23
443.540	82,028.63	420.34
443.640	81,272.52	490.79
443.740	80,520.74	565.57
443.840	79,773.53	644.93
443.940	79,030.93	728.89
444.040	78,292.77	817.28
444.140	77,558.77	909.84
444.240	76,829.08	1,006.71
444.340	76,104.04	1,108.23
444.440	75,384.29	1,215.04
444.540	74,669.85	1,327.16
444.640	73,960.97	1,444.84
444.740	73,257.63	1,568.06
444.840	72,558.84	1,695.83
444.940	71,863.89	1,827.44
445.040	71,172.65	1,962.76
445.140	70,484.94	2,101.60
445.240	69,800.59	2,243.82
445.340	69,119.66	2,389.44
445.440	68,442.19	2,538.53
445.540	67,768.03	2,690.93

Elevation (m)	Volume over (m³)	Volume under (m³)
445.640	67,097.00	2,846.46
445.740	66,429.07	3,005.09
445.840	65,764.25	3,166.83
445.940	65,102.61	3,331.75
446.040	64,444.19	3,499.90
446.140	63,788.91	3,671.17
446.240	63,136.89	3,845.71
446.340	62,488.31	4,023.69
446.440	61,843.06	4,205.00
446.540	61,201.12	4,389.62
446.640	60,562.44	4,577.50
446.740	59,927.02	4,768.63
446.840	59,295.04	4,963.22
446.940	58,666.57	5,161.31
447.040	58,041.64	5,362.94
447.140	57,420.15	5,568.00
447.240	56,802.21	5,776.62
447.340	56,188.17	5,989.14
447.440	55,578.20	6,205.73
447.540	54,972.72	6,426.81
447.640	54,372.10	6,652.75
447.740	53,776.25	6,883.46
447.840	53,184.89	7,118.66
447.940	52,597.70	7,358.03
448.040	52,014.74	7,601.63
448.140	51,436.26	7,849.71
448.240	50,862.15	8,102.16
448.340	50,292.39	8,358.96
448.440	49,726.75	8,619.88
448.540	49,164.78	8,884.47
448.640	48,606.27	9,152.52
448.740	48,051.35	9,424.16
448.840	47,500.09	9,699.46
448.940	46,952.27	9,978.19
449.040	46,407.80	10,260.28

Elevation (m)	Volume over (m³)	Volume under (m³)
449.140	45,866.58	10,545.62
449.240	45,328.47	10,834.07
449.340	44,793.38	11,125.55
449.440	44,261.49	11,420.22
449.540	43,733.22	11,718.50
449.640	43,208.79	12,020.63
449.740	42,688.13	12,326.53
449.840	42,171.45	12,636.41
449.940	41,659.62	12,951.14
450.040	41,152.82	13,270.90
450.140	40,650.19	13,594.83
450.240	40,150.84	13,922.04
450.340	39,654.33	14,252.08
450.440	39,160.53	14,584.85
450.540	38,669.43	14,920.31
450.640	38,180.76	15,258.20
450.740	37,694.24	15,598.23
450.840	37,209.92	15,940.47
450.940	36,727.89	16,285.00
451.040	36,248.22	16,631.89
451.140	35,771.04	16,981.27
451.240	35,296.29	17,333.09
451.340	34,823.73	17,687.08
451.440	34,353.24	18,043.15
451.540	33,884.70	18,401.17
451.640	33,418.05	18,761.08
451.740	32,953.29	19,122.88
451.840	32,490.42	19,486.57
451.940	32,029.46	19,852.17
452.040	31,570.40	20,219.66
452.140	31,113.23	20,589.06
452.240	30,657.98	20,960.37
452.340	30,204.65	21,333.60
452.440	29,753.24	21,708.75
452.540	29,303.73	22,085.79



Elevation (m)	Volume over (m³)	Volume under (m³)	Elevation (m)	Volume over (m³)	Volume under (m³)	Elevation (m)	Volume over (m³)	Volume under (m³)
452.640	28,856.17	22,464.80	456.140	15,496.63	38,034.83	459.640	6,852.44	58,320.22
452.740	28,410.66	22,845.85	456.240	15,185.57	38,550.33	459.740	6,667.83	58,962.17
452.840	27,967.27	23,229.01	456.340	14,878.58	39,069.90	459.840	6,486.08	59,606.98
452.940	27,526.09	23,614.39	456.440	14,575.40	39,593.28	459.940	6,307.05	60,254.51
453.040	27,087.57	24,002.43	456.540	14,276.08	40,120.53	460.040	6,130.74	60,904.76
453.140	26,652.60	24,394.03	456.640	13,980.64	40,651.64	460.140	5,957.08	61,557.66
453.240	26,221.59	24,789.57	456.740	13,689.15	41,186.71	460.240	5,786.04	62,213.18
453.340	25,794.67	25,189.21	456.840	13,401.59	41,725.71	460.340	5,617.63	62,871.33
453.440	25,371.85	25,592.95	456.940	13,117.88	42,268.56	460.440	5,451.92	63,532.18
453.540	24,953.03	26,000.69	457.040	12,838.03	42,815.27	460.540	5,288.94	64,195.76
453.640	24,538.20	26,412.42	457.140	12,562.32	43,366.12	460.640	5,128.70	64,862.08
453.740	24,127.54	26,828.32	457.240	12,290.56	43,920.92	460.740	4,971.13	65,531.07
453.840	23,721.38	27,248.72	457.340	12,022.63	44,479.54	460.840	4,816.16	66,202.66
453.940	23,319.66	27,673.56	457.440	11,758.56	45,042.03	460.940	4,663.59	66,876.65
454.040	22,922.37	28,102.82	457.540	11,498.23	45,608.26	461.040	4,513.35	67,552.97
454.140	22,529.35	28,536.37	457.640	11,241.64	46,178.24	461.140	4,365.38	68,231.56
454.240	22,140.48	28,974.06	457.740	10,988.80	46,751.95	461.240	4,219.71	68,912.45
454.340	21,755.69	29,415.82	457.840	10,739.53	47,329.25	461.340	4,076.46	69,595.75
454.440	21,374.93	29,861.62	457.940	10,493.75	47,910.03	461.440	3,935.80	70,281.66
454.540	20,998.11	30,311.37	458.040	10,251.47	48,494.30	461.540	3,798.07	70,970.48
454.640	20,625.28	30,765.10	458.140	10,012.65	49,082.04	461.640	3,663.55	71,662.53
454.740	20,256.42	31,222.79	458.240	9,777.30	49,673.26	461.740	3,532.04	72,357.57
454.840	19,891.57	31,684.50	458.340	9,545.46	50,267.97	461.840	3,403.13	73,055.22
454.940	19,530.69	32,150.18	458.440	9,317.17	50,866.24	461.940	3,276.45	73,755.10
455.040	19,173.76	32,619.81	458.540	9,092.41	51,468.04	462.040	3,151.89	74,457.10
455.140	18,820.85	33,093.46	458.640	8,871.26	52,073.45	462.140	3,029.45	75,161.22
455.240	18,471.74	33,570.91	458.740	8,653.71	52,682.46	462.240	2,909.32	75,867.65
455.340	18,126.24	34,051.96	458.840	8,439.87	53,295.18	462.340	2,791.74	76,576.63
455.440	17,784.32	34,536.60	458.940	8,229.76	53,911.63	462.440	2,676.76	77,288.20
455.540	17,446.10	35,024.95	459.040	8,023.31	54,531.74	462.540	2,563.97	78,001.98
455.640	17,111.60	35,517.01	459.140	7,820.31	55,155.30	462.640	2,453.30	78,717.87
455.740	16,780.84	36,012.81	459.240	7,620.60	55,782.14	462.740	2,344.84	79,435.96
455.840	16,454.00	36,512.52	459.340	7,424.07	56,412.18	462.840	2,238.77	80,156.45
455.940	16,130.93	37,016.02	459.440	7,230.56	57,045.23	462.940	2,135.38	80,879.63
456.040	15,811.79	37,523.44	459.540	7,040.03	57,681.26	463.040	2,034.91	81,605.71



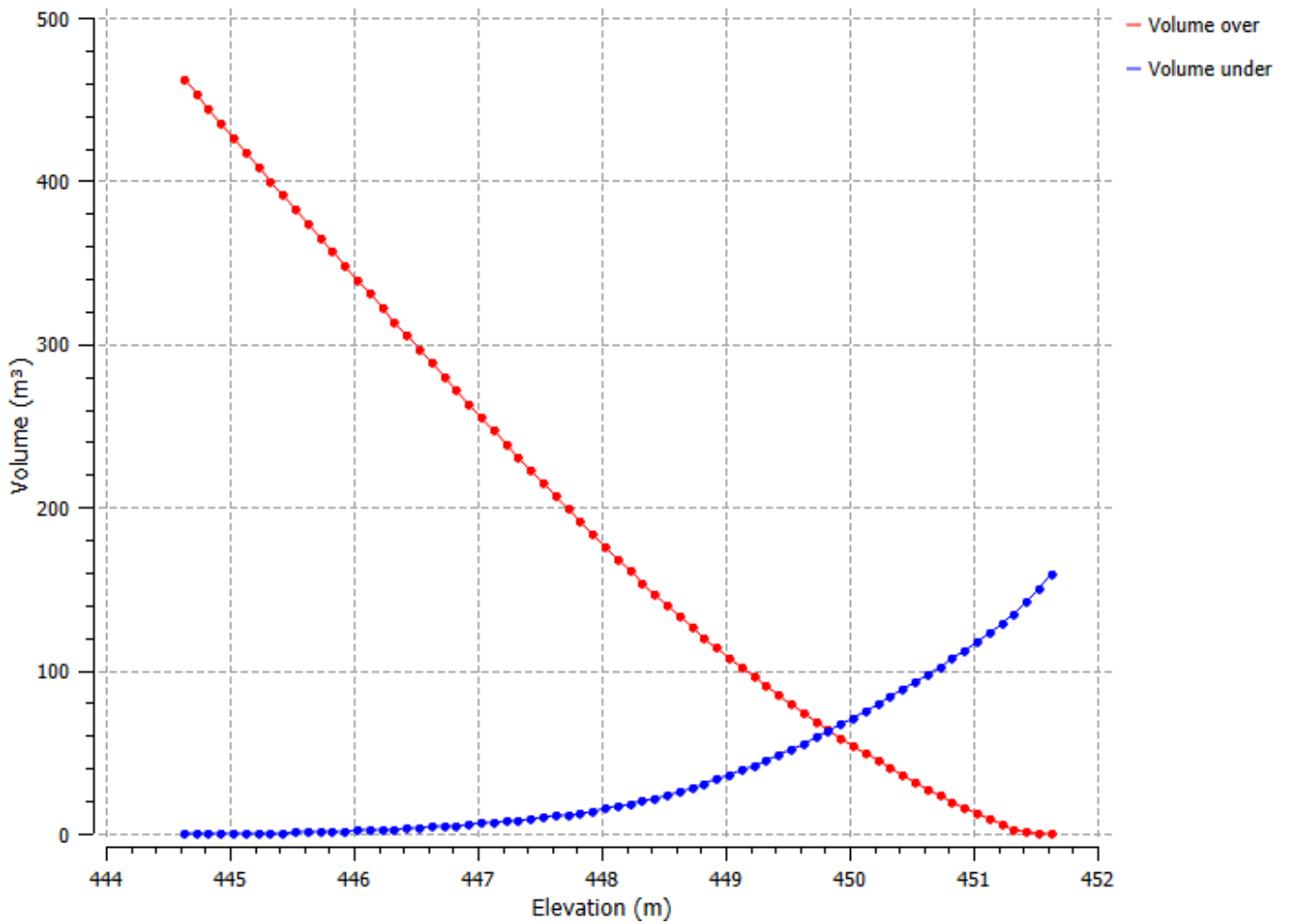
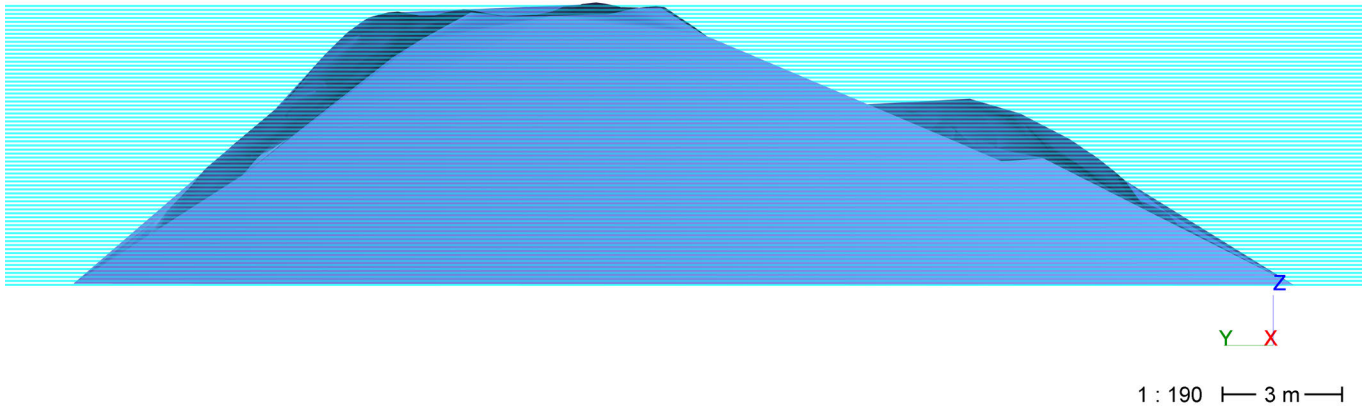
Elevation (m)	Volume over (m³)	Volume under (m³)
463.140	1,937.42	82,334.78
463.240	1,842.78	83,066.71
463.340	1,750.58	83,801.07
463.440	1,660.47	84,537.51
463.540	1,572.68	85,276.29
463.640	1,487.31	86,017.47
463.740	1,404.22	86,760.94
463.840	1,323.24	87,506.52
463.940	1,244.25	88,254.09
464.040	1,167.32	89,003.72
464.140	1,092.53	89,755.49
464.240	1,019.98	90,509.50
464.340	949.89	91,265.97
464.440	882.36	92,025.00
464.540	817.11	92,786.30
464.640	754.24	93,549.99
464.740	693.84	94,316.16
464.840	636.01	95,084.89
464.940	580.61	95,856.04
465.040	527.58	96,629.58
465.140	476.93	97,405.48
465.240	428.75	98,183.86
465.340	383.34	98,965.02
465.440	341.03	99,749.26
465.540	301.45	100,536.24
465.640	264.60	101,325.95
465.740	230.21	102,118.12
465.840	198.19	102,912.66
465.940	168.45	103,709.48
466.040	141.17	104,508.76
466.140	116.85	105,310.99
466.240	95.28	106,115.99
466.340	76.43	106,923.70
466.440	60.26	107,734.08
466.540	46.66	108,547.05

Elevation (m)	Volume over (m³)	Volume under (m³)
466.640	35.10	109,362.04
466.740	25.34	110,178.84
466.840	17.45	110,997.51
466.940	11.42	111,818.05
467.040	7.03	112,640.21
467.140	3.98	113,463.72
467.240	2.08	114,288.39
467.340	0.95	115,113.81
467.440	0.23	115,939.65
467.540	0.01	116,765.99



Volume from Elevation 6a

Direction: X= 0 m ; Y= 0 m ; Z= 1 m





Elevation (m)	Volume over (m³)	Volume under (m³)
444.630	461.44	0.00
444.730	452.59	0.00
444.830	443.76	0.03
444.930	434.93	0.06
445.030	426.12	0.11
445.130	417.33	0.17
445.230	408.55	0.25
445.330	399.80	0.35
445.430	391.06	0.47
445.530	382.34	0.61
445.630	373.65	0.78
445.730	364.98	0.96
445.830	356.34	1.18
445.930	347.72	1.41
446.030	339.13	1.68
446.130	330.57	1.98
446.230	322.04	2.31
446.330	313.55	2.67
446.430	305.09	3.07
446.530	296.67	3.51
446.630	288.28	3.98
446.730	279.93	4.48
446.830	271.61	5.02
446.930	263.33	5.59
447.030	255.07	6.19
447.130	246.86	6.84
447.230	238.68	7.52
447.330	230.55	8.25
447.430	222.47	9.02
447.530	214.45	9.85
447.630	206.47	10.74
447.730	198.56	11.68
447.830	190.76	12.73
447.930	183.05	13.89
448.030	175.47	15.16

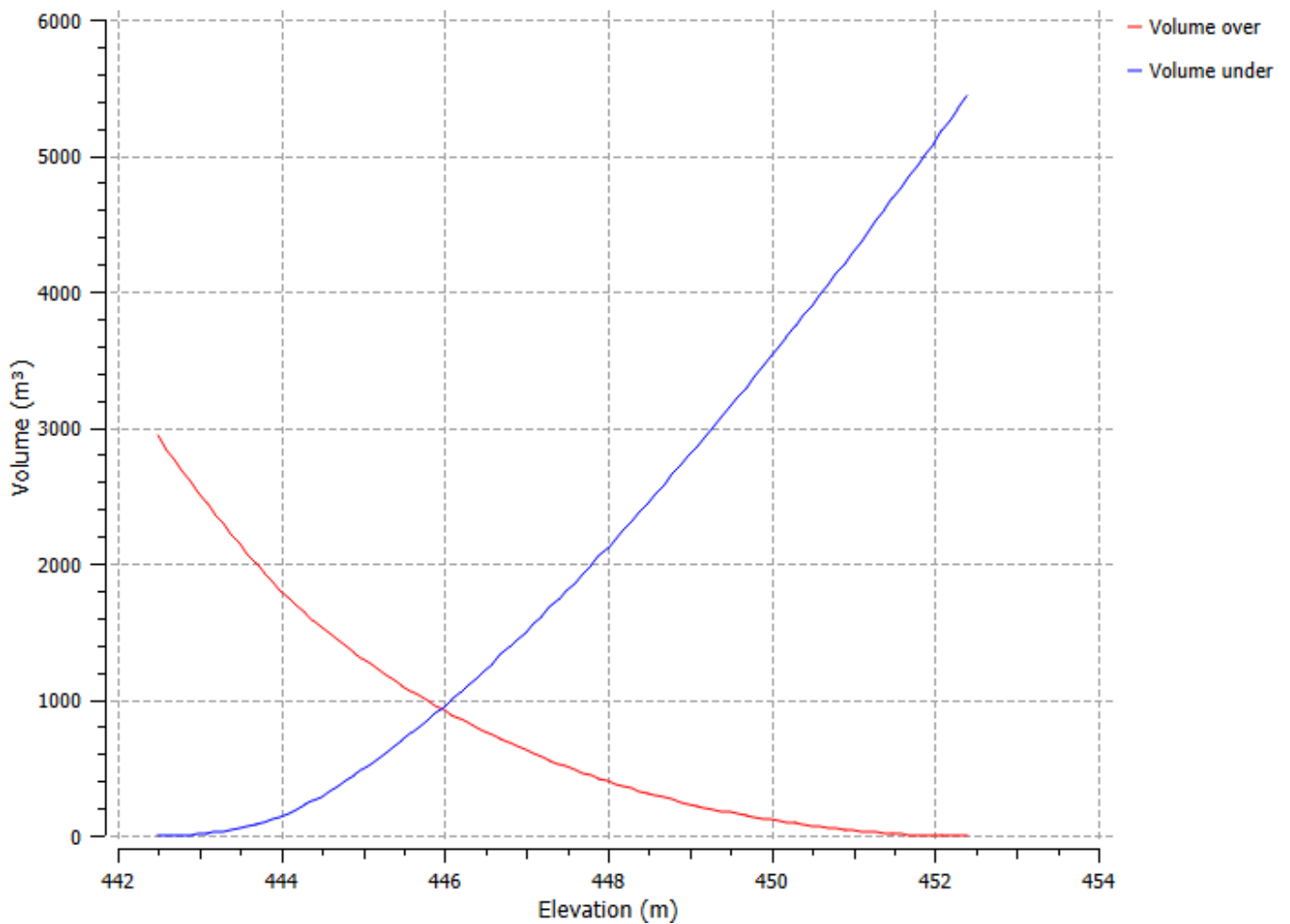
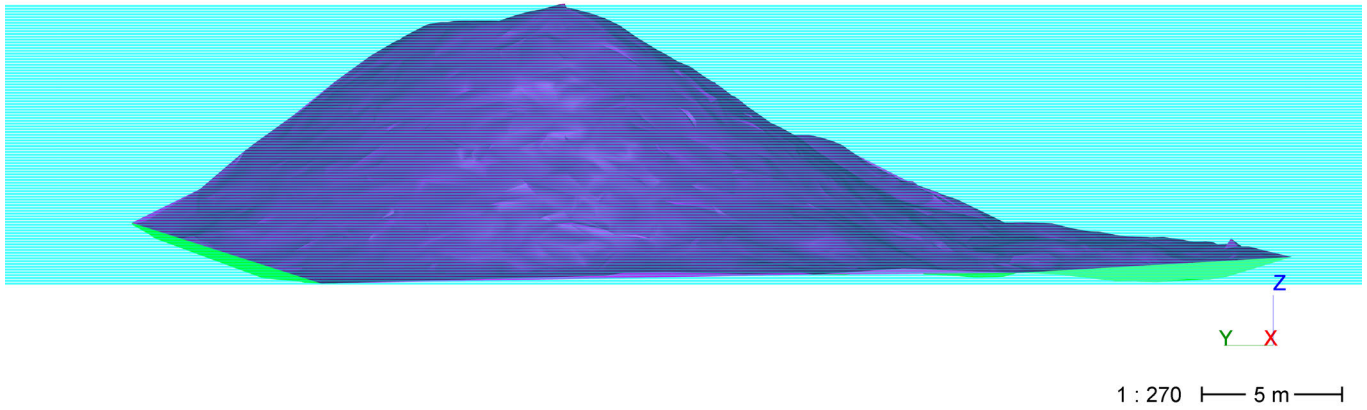
Elevation (m)	Volume over (m³)	Volume under (m³)
448.130	168.01	16.56
448.230	160.68	18.08
448.330	153.50	19.76
448.430	146.47	21.59
448.530	139.60	23.57
448.630	132.89	25.72
448.730	126.33	28.02
448.830	119.92	30.47
448.930	113.68	33.08
449.030	107.61	35.87
449.130	101.71	38.83
449.230	95.96	41.93
449.330	90.32	45.15
449.430	84.77	48.46
449.530	79.32	51.86
449.630	73.96	55.37
449.730	68.73	58.99
449.830	63.63	62.74
449.930	58.65	66.62
450.030	53.79	70.61
450.130	49.04	74.73
450.230	44.43	78.97
450.330	39.94	83.34
450.430	35.57	87.83
450.530	31.32	92.44
450.630	27.20	97.17
450.730	23.19	102.02
450.830	19.29	106.97
450.930	15.51	112.05
451.030	11.89	117.29
451.130	8.43	122.68
451.230	5.14	128.25
451.330	2.44	134.40
451.430	0.96	141.79
451.530	0.27	149.96

Elevation (m)	Volume over (m³)	Volume under (m³)
451.630	0.02	158.56



Volume from Elevation 6b

Direction: X= 0 m ; Y= 0 m ; Z= 1 m





Elevation (m)	Volume over (m³)	Volume under (m³)
442.490	2,934.81	0.00
442.590	2,850.45	0.13
442.690	2,766.67	0.86
442.790	2,683.79	2.47
442.890	2,602.07	5.25
442.990	2,521.99	9.67
443.090	2,443.51	15.69
443.190	2,366.41	23.09
443.290	2,290.64	31.82
443.390	2,216.05	41.73
443.490	2,142.69	52.87
443.590	2,070.91	65.59
443.690	2,001.05	80.23
443.790	1,933.16	96.84
443.890	1,867.59	115.77
443.990	1,805.14	137.83
444.090	1,745.82	163.00
444.190	1,689.50	191.18
444.290	1,635.50	221.68
444.390	1,583.32	254.00
444.490	1,532.84	288.02
444.590	1,484.01	323.69
444.690	1,436.77	360.95
444.790	1,390.90	399.58
444.890	1,346.28	439.45
444.990	1,302.87	480.55
445.090	1,260.63	522.81
445.190	1,219.45	566.13
445.290	1,179.26	610.44
445.390	1,140.04	655.72
445.490	1,101.77	701.95
445.590	1,064.44	749.11
445.690	1,027.96	797.14
445.790	992.34	846.01
445.890	957.56	895.73

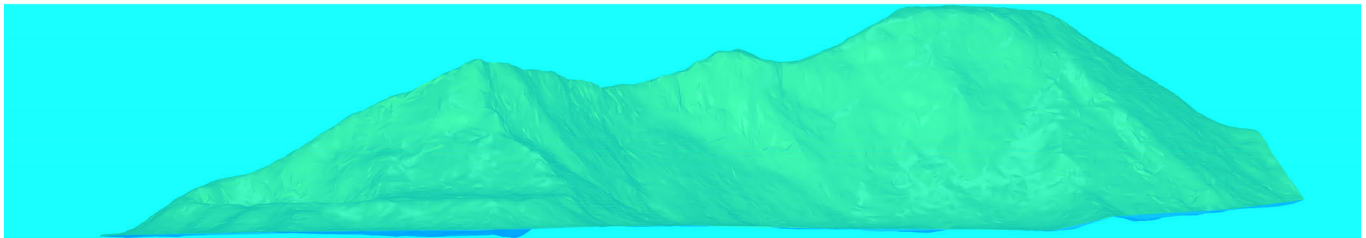
Elevation (m)	Volume over (m³)	Volume under (m³)
445.990	923.61	946.29
446.090	890.51	997.68
446.190	858.22	1,049.89
446.290	826.69	1,102.86
446.390	795.93	1,156.61
446.490	765.95	1,211.12
446.590	736.70	1,266.37
446.690	708.17	1,322.34
446.790	680.35	1,379.02
446.890	653.23	1,436.40
446.990	626.84	1,494.51
447.090	601.18	1,553.35
447.190	576.22	1,612.89
447.290	551.95	1,673.12
447.390	528.36	1,734.03
447.490	505.42	1,795.59
447.590	483.17	1,857.84
447.690	461.60	1,920.77
447.790	440.65	1,984.32
447.890	420.30	2,048.47
447.990	400.55	2,113.22
448.090	381.39	2,178.56
448.190	362.81	2,244.48
448.290	344.80	2,310.97
448.390	327.34	2,378.00
448.490	310.39	2,445.56
448.590	293.98	2,513.64
448.690	278.09	2,582.25
448.790	262.72	2,651.39
448.890	247.86	2,721.03
448.990	233.49	2,791.15
449.090	219.59	2,861.76
449.190	206.18	2,932.85
449.290	193.27	3,004.43
449.390	180.81	3,076.47

Elevation (m)	Volume over (m³)	Volume under (m³)
449.490	168.78	3,148.94
449.590	157.17	3,221.83
449.690	145.97	3,295.13
449.790	135.20	3,368.86
449.890	124.86	3,443.02
449.990	114.93	3,517.59
450.090	105.43	3,592.59
450.190	96.34	3,668.00
450.290	87.65	3,743.81
450.390	79.35	3,820.01
450.490	71.42	3,896.58
450.590	63.84	3,973.50
450.690	56.62	4,050.78
450.790	49.75	4,128.41
450.890	43.23	4,206.39
450.990	37.04	4,284.70
451.090	31.18	4,363.34
451.190	25.66	4,442.32
451.290	20.48	4,521.64
451.390	15.70	4,601.35
451.490	11.51	4,681.67
451.590	8.09	4,762.75
451.690	5.40	4,844.56
451.790	3.33	4,926.99
451.890	2.02	5,010.18
451.990	1.17	5,093.83
452.090	0.57	5,177.73
452.190	0.19	5,261.85
452.290	0.04	5,346.19
452.390	0.00	5,430.66

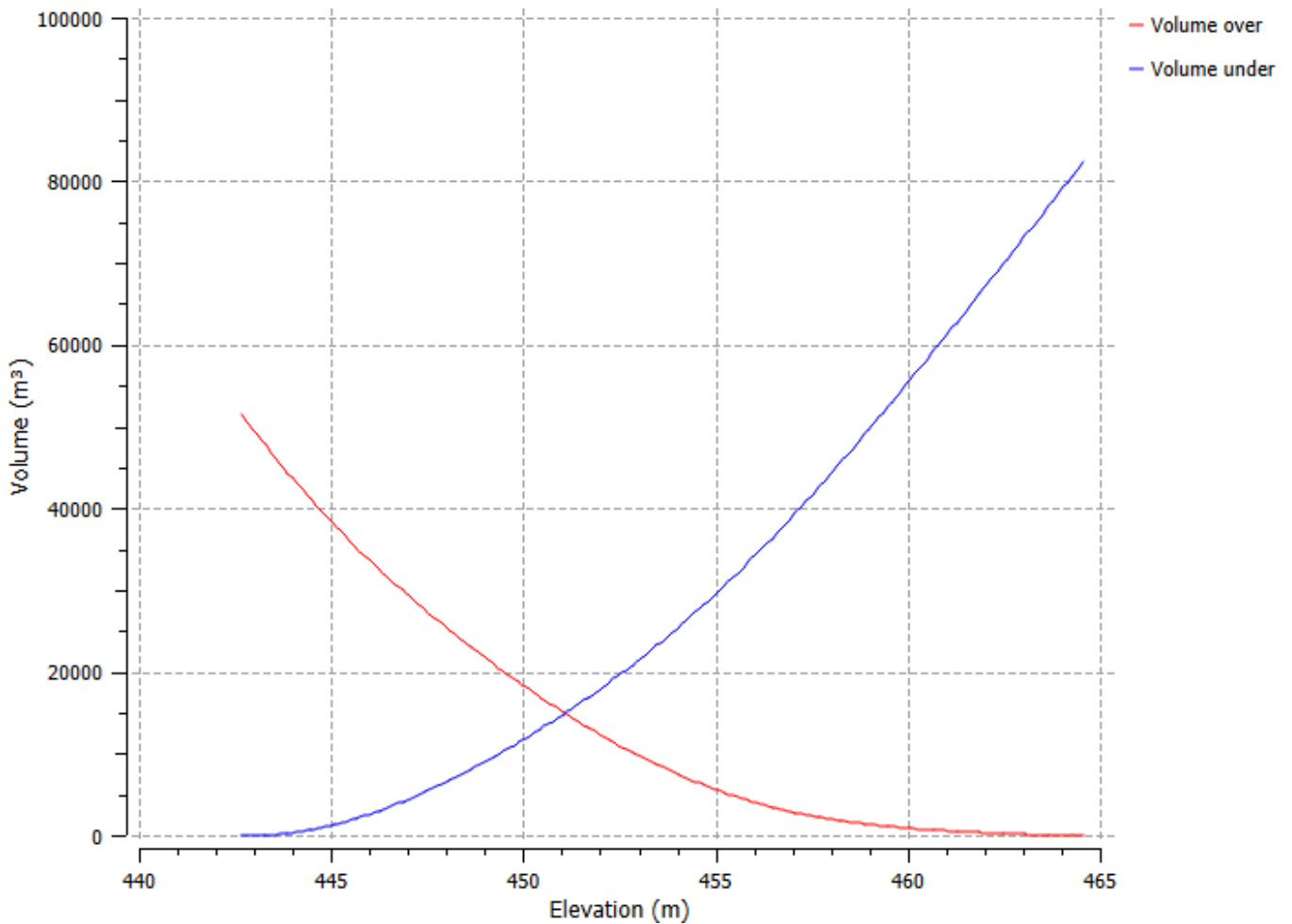


Volume from Elevation 7

Direction: X= 0 m ; Y= 0 m ; Z= 1 m



1 : 710 | 12 m |





Elevation (m)	Volume over (m³)	Volume under (m³)
442.670	51,453.78	0.00
442.770	50,842.76	0.04
442.870	50,232.14	0.48
442.970	49,622.87	2.26
443.070	49,016.65	7.10
443.170	48,414.68	16.19
443.270	47,816.44	29.01
443.370	47,221.90	45.53
443.470	46,632.83	67.51
443.570	46,050.62	96.36
443.670	45,476.38	133.19
443.770	44,908.74	176.60
443.870	44,347.12	226.04
443.970	43,794.33	284.31
444.070	43,249.21	350.24
444.170	42,709.53	421.62
444.270	42,174.56	497.71
444.370	41,644.09	578.29
444.470	41,118.29	663.56
444.570	40,597.05	753.38
444.670	40,080.39	847.77
444.770	39,568.45	946.89
444.870	39,061.27	1,050.76
444.970	38,558.80	1,159.35
445.070	38,060.80	1,272.41
445.170	37,567.44	1,390.11
445.270	37,078.98	1,512.71
445.370	36,595.42	1,640.20
445.470	36,116.93	1,772.77
445.570	35,643.41	1,910.32
445.670	35,174.53	2,052.49
445.770	34,710.37	2,199.39
445.870	34,250.90	2,350.98
445.970	33,796.41	2,507.55
446.070	33,346.93	2,669.12

Elevation (m)	Volume over (m³)	Volume under (m³)
446.170	32,901.90	2,835.15
446.270	32,461.06	3,005.36
446.370	32,024.54	3,179.91
446.470	31,592.27	3,358.69
446.570	31,164.10	3,541.58
446.670	30,739.86	3,728.40
446.770	30,319.81	3,919.40
446.870	29,903.67	4,114.32
446.970	29,490.94	4,312.65
447.070	29,081.52	4,514.28
447.170	28,675.23	4,719.06
447.270	28,271.99	4,926.87
447.370	27,871.70	5,137.64
447.470	27,474.36	5,351.36
447.570	27,080.00	5,568.06
447.670	26,688.64	5,787.76
447.770	26,300.23	6,010.41
447.870	25,914.71	6,235.94
447.970	25,531.97	6,464.26
448.070	25,152.05	6,695.40
448.170	24,774.96	6,929.36
448.270	24,400.65	7,166.12
448.370	24,029.11	7,405.63
448.470	23,660.31	7,647.88
448.570	23,294.25	7,892.88
448.670	22,930.95	8,140.65
448.770	22,570.34	8,391.09
448.870	22,212.33	8,644.14
448.970	21,856.96	8,899.83
449.070	21,504.21	9,158.13
449.170	21,154.05	9,419.04
449.270	20,806.49	9,682.53
449.370	20,461.52	9,948.62
449.470	20,119.10	10,217.26
449.570	19,779.22	10,488.44

Elevation (m)	Volume over (m³)	Volume under (m³)
449.670	19,441.90	10,762.18
449.770	19,107.17	11,038.50
449.870	18,775.00	11,317.39
449.970	18,445.37	11,598.82
450.070	18,118.30	11,882.80
450.170	17,793.79	12,169.35
450.270	17,471.81	12,458.43
450.370	17,152.35	12,750.03
450.470	16,835.47	13,044.21
450.570	16,521.14	13,340.94
450.670	16,209.36	13,640.21
450.770	15,900.15	13,942.06
450.870	15,593.53	14,246.49
450.970	15,289.45	14,553.48
451.070	14,987.93	14,863.02
451.170	14,688.94	15,175.08
451.270	14,392.43	15,489.63
451.370	14,098.39	15,806.65
451.470	13,806.80	16,126.11
451.570	13,517.76	16,448.13
451.670	13,231.71	16,773.13
451.770	12,948.70	17,101.19
451.870	12,668.59	17,432.14
451.970	12,391.27	17,765.87
452.070	12,116.76	18,102.42
452.170	11,845.11	18,441.83
452.270	11,576.35	18,784.13
452.370	11,310.66	19,129.50
452.470	11,048.31	19,478.20
452.570	10,789.44	19,830.39
452.670	10,534.13	20,186.13
452.770	10,282.37	20,545.43
452.870	10,034.48	20,908.60
452.970	9,790.70	21,275.88
453.070	9,550.74	21,646.98



Elevation (m)	Volume over (m³)	Volume under (m³)
453.170	9,314.52	22,021.82
453.270	9,082.04	22,400.40
453.370	8,853.46	22,782.87
453.470	8,628.87	23,169.34
453.570	8,408.05	23,559.58
453.670	8,191.02	23,953.61
453.770	7,977.72	24,351.37
453.870	7,767.93	24,752.63
453.970	7,561.62	25,157.38
454.070	7,358.80	25,565.62
454.170	7,159.31	25,977.19
454.270	6,963.00	26,391.94
454.370	6,769.79	26,809.78
454.470	6,579.71	27,230.76
454.570	6,392.78	27,654.89
454.670	6,208.98	28,082.15
454.770	6,028.31	28,512.53
454.870	5,850.75	28,946.03
454.970	5,676.31	29,382.64
455.070	5,504.89	29,822.28
455.170	5,336.63	30,265.08
455.270	5,171.54	30,711.06
455.370	5,009.65	31,160.22
455.470	4,850.88	31,612.51
455.570	4,695.21	32,067.90
455.670	4,542.70	32,526.44
455.770	4,393.64	32,988.45
455.870	4,248.45	33,454.31
455.970	4,107.45	33,924.36
456.070	3,970.02	34,397.99
456.170	3,835.86	34,874.90
456.270	3,704.96	35,355.05
456.370	3,577.25	35,838.40
456.470	3,452.67	36,324.88
456.570	3,331.16	36,814.43

Elevation (m)	Volume over (m³)	Volume under (m³)
456.670	3,212.89	37,307.22
456.770	3,098.27	37,803.65
456.870	2,987.43	38,303.87
456.970	2,880.68	38,808.17
457.070	2,777.75	39,316.31
457.170	2,678.70	39,828.31
457.270	2,583.32	40,343.99
457.370	2,491.03	40,862.76
457.470	2,401.52	41,384.30
457.570	2,314.62	41,908.46
457.670	2,230.22	42,435.12
457.770	2,148.20	42,964.16
457.870	2,068.50	43,495.52
457.970	1,991.16	44,029.24
458.070	1,916.20	44,565.33
458.170	1,843.46	45,103.65
458.270	1,772.98	45,644.23
458.370	1,704.88	46,187.18
458.470	1,639.01	46,732.37
458.570	1,575.37	47,279.79
458.670	1,513.87	47,829.34
458.770	1,454.33	48,380.86
458.870	1,396.76	48,934.35
458.970	1,341.20	49,489.85
459.070	1,287.68	50,047.39
459.170	1,236.26	50,607.03
459.270	1,187.00	51,168.82
459.370	1,139.69	51,732.57
459.470	1,094.11	52,298.05
459.570	1,050.16	52,865.16
459.670	1,007.72	53,433.77
459.770	966.79	54,003.90
459.870	927.25	54,575.42
459.970	888.94	55,148.18
460.070	851.80	55,722.09

Elevation (m)	Volume over (m³)	Volume under (m³)
460.170	815.79	56,297.13
460.270	780.89	56,873.30
460.370	747.13	57,450.59
460.470	714.35	58,028.87
460.570	682.41	58,607.99
460.670	651.29	59,187.92
460.770	620.98	59,768.67
460.870	591.46	60,350.21
460.970	562.70	60,932.51
461.070	534.69	61,515.56
461.170	507.43	62,099.35
461.270	480.91	62,683.89
461.370	455.11	63,269.15
461.470	430.03	63,855.13
461.570	405.69	64,441.85
461.670	382.08	65,029.30
461.770	359.20	65,617.47
461.870	337.05	66,206.38
461.970	315.59	66,795.98
462.070	294.82	67,386.26
462.170	274.72	67,977.23
462.270	255.30	68,568.86
462.370	236.50	69,161.12
462.470	218.32	69,754.00
462.570	200.74	70,347.48
462.670	183.75	70,941.54
462.770	167.33	71,536.18
462.870	151.48	72,131.39
462.970	136.20	72,727.17
463.070	121.48	73,323.51
463.170	107.31	73,920.39
463.270	93.70	74,517.84
463.370	80.70	75,115.90
463.470	68.38	75,714.64
463.570	56.78	76,314.09

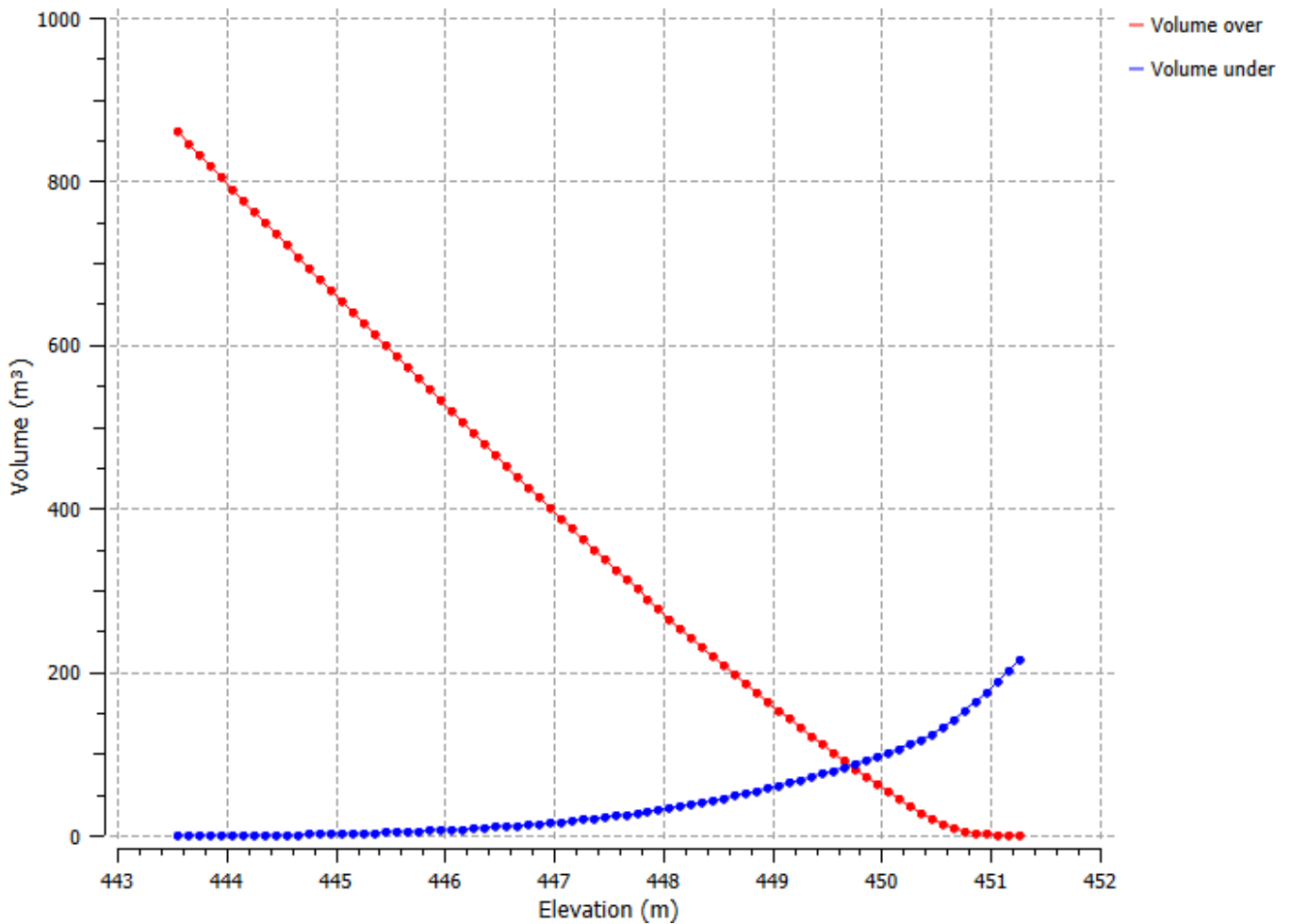
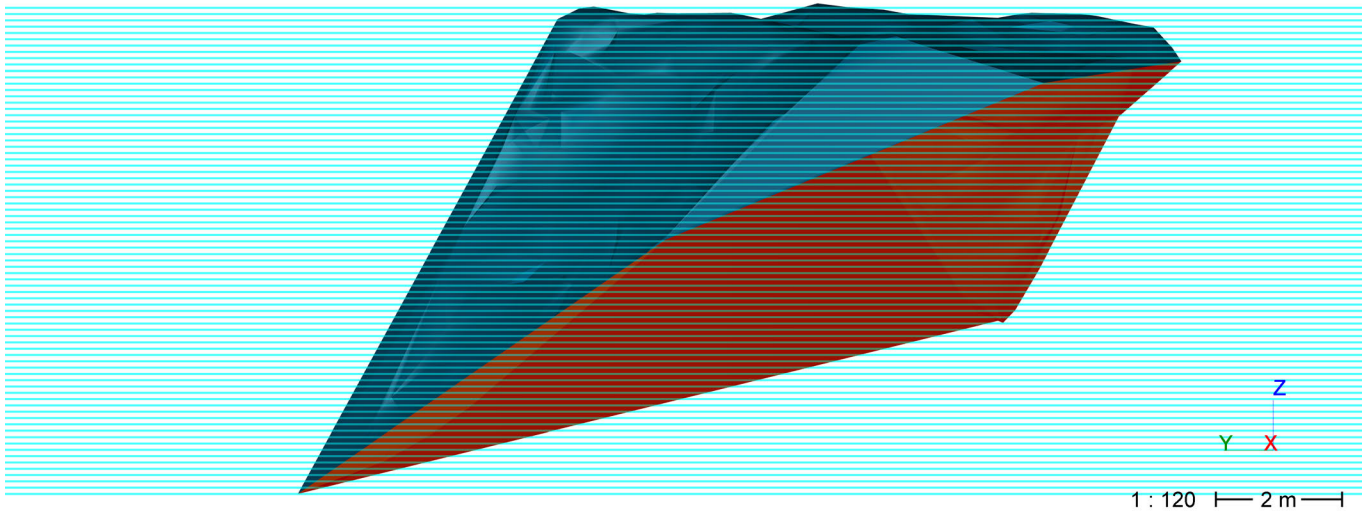


Elevation (m)	Volume over (m³)	Volume under (m³)
463.670	45.89	76,914.26
463.770	35.79	77,515.22
463.870	26.60	78,117.08
463.970	18.54	78,720.09
464.070	11.89	79,324.49
464.170	6.62	79,930.28
464.270	2.75	80,537.47
464.370	0.65	81,146.43
464.470	0.09	81,756.92
464.570	0.00	82,367.89



Volume from Elevation 8a

Direction: X= 0 m ; Y= 0 m ; Z= 1 m





Elevation (m)	Volume over (m³)	Volume under (m³)
443.560	860.39	0.00
443.660	846.42	0.00
443.760	832.46	0.01
443.860	818.51	0.04
443.960	804.59	0.09
444.060	790.68	0.16
444.160	776.80	0.25
444.260	762.94	0.36
444.360	749.09	0.49
444.460	735.27	0.65
444.560	721.48	0.83
444.660	707.71	1.03
444.760	693.97	1.27
444.860	680.26	1.53
444.960	666.58	1.83
445.060	652.94	2.16
445.160	639.32	2.51
445.260	625.73	2.90
445.360	612.17	3.31
445.460	598.64	3.76
445.560	585.15	4.23
445.660	571.68	4.74
445.760	558.25	5.28
445.860	544.84	5.85
445.960	531.48	6.46
446.060	518.14	7.10
446.160	504.84	7.77
446.260	491.58	8.48
446.360	478.37	9.24
446.460	465.22	10.07
446.560	452.13	10.95
446.660	439.11	11.91
446.760	426.16	12.93
446.860	413.28	14.03
446.960	400.48	15.20

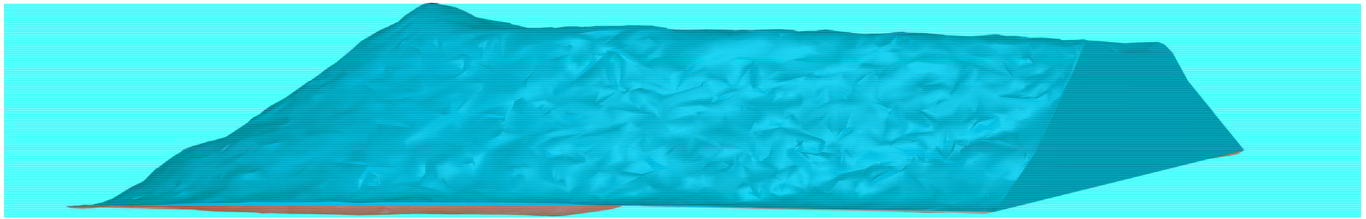
Elevation (m)	Volume over (m³)	Volume under (m³)
447.060	387.76	16.45
447.160	375.10	17.77
447.260	362.53	19.17
447.360	350.03	20.65
447.460	337.62	22.21
447.560	325.29	23.85
447.660	313.05	25.58
447.760	300.90	27.41
447.860	288.85	29.33
447.960	276.89	31.35
448.060	265.03	33.46
448.160	253.27	35.67
448.260	241.62	38.00
448.360	230.09	40.45
448.460	218.69	43.02
448.560	207.41	45.71
448.660	196.25	48.53
448.760	185.20	51.45
448.860	174.27	54.49
448.960	163.44	57.64
449.060	152.72	60.89
449.160	142.12	64.26
449.260	131.63	67.75
449.360	121.28	71.37
449.460	111.07	75.14
449.560	101.02	79.06
449.660	91.12	83.14
449.760	81.37	87.36
449.860	71.77	91.73
449.960	62.31	96.25
450.060	53.00	100.91
450.160	43.93	105.82
450.260	35.20	111.06
450.360	26.85	116.68
450.460	19.32	123.13

Elevation (m)	Volume over (m³)	Volume under (m³)
450.560	13.21	130.99
450.660	8.57	140.33
450.760	5.45	151.17
450.860	3.26	162.97
450.960	1.70	175.37
451.060	0.64	188.29
451.160	0.12	201.74
451.260	0.01	215.60

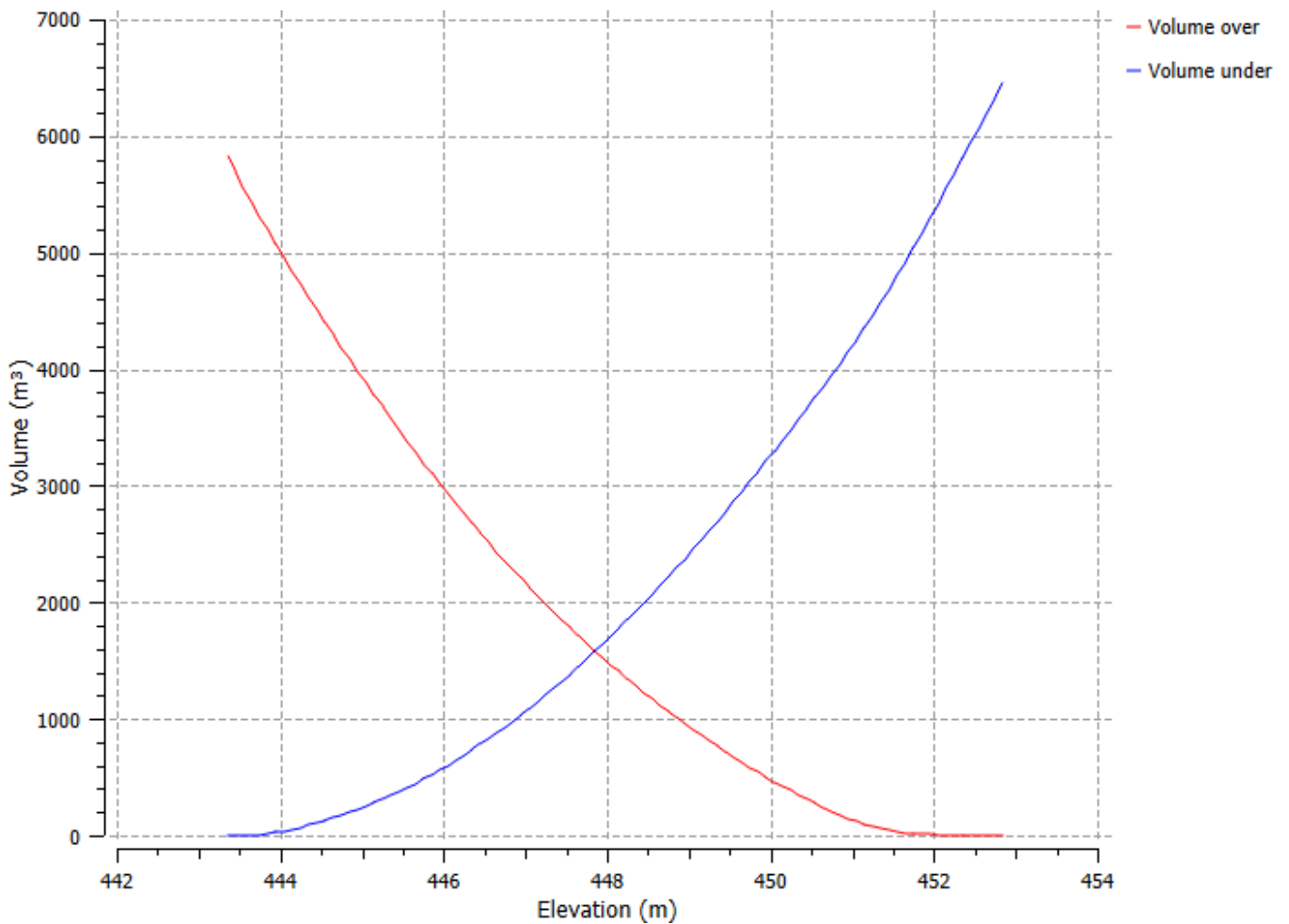


Volume from Elevation 8b

Direction: X= 0 m ; Y= 0 m ; Z= 1 m



1 : 340 — 5 m —





Elevation (m)	Volume over (m³)	Volume under (m³)
443.350	5,824.34	0.00
443.450	5,695.21	0.08
443.550	5,566.89	0.98
443.650	5,440.13	3.44
443.750	5,315.07	7.59
443.850	5,192.16	13.89
443.950	5,072.60	23.55
444.050	4,956.04	36.20
444.150	4,841.81	51.19
444.250	4,729.37	67.96
444.350	4,618.46	86.27
444.450	4,508.95	105.97
444.550	4,400.71	126.94
444.650	4,293.75	149.19
444.750	4,188.04	172.70
444.850	4,083.59	197.47
444.950	3,980.43	223.52
445.050	3,878.55	250.86
445.150	3,777.94	279.46
445.250	3,678.56	309.29
445.350	3,580.42	340.36
445.450	3,483.58	372.74
445.550	3,388.08	406.45
445.650	3,294.08	441.66
445.750	3,201.57	478.38
445.850	3,110.49	516.51
445.950	3,020.89	556.12
446.050	2,932.71	597.16
446.150	2,845.98	639.64
446.250	2,760.69	683.57
446.350	2,676.87	728.96
446.450	2,594.52	775.82
446.550	2,513.62	824.13
446.650	2,434.17	873.90
446.750	2,356.19	925.14

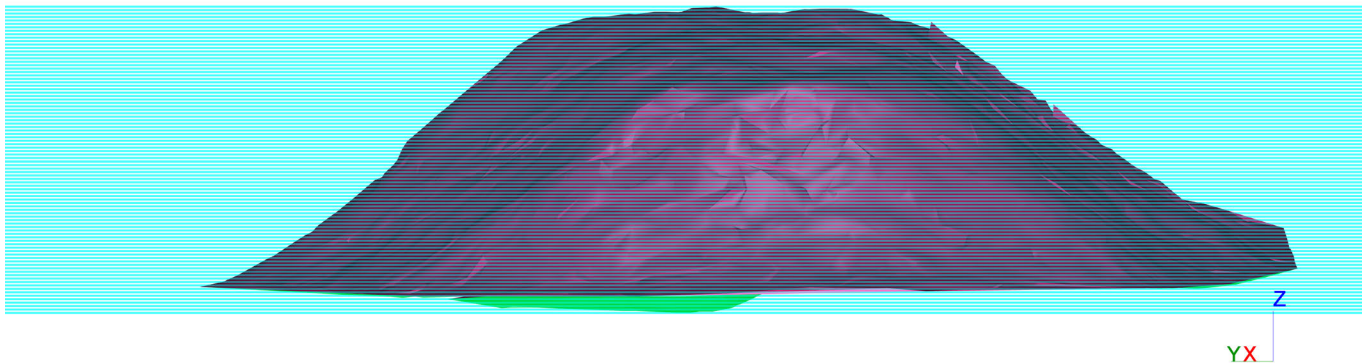
Elevation (m)	Volume over (m³)	Volume under (m³)
446.850	2,279.65	977.81
446.950	2,204.50	1,031.88
447.050	2,130.69	1,087.28
447.150	2,058.22	1,144.02
447.250	1,987.10	1,202.11
447.350	1,917.28	1,261.51
447.450	1,848.76	1,322.20
447.550	1,781.52	1,384.18
447.650	1,715.50	1,447.37
447.750	1,650.64	1,511.72
447.850	1,586.93	1,577.23
447.950	1,524.37	1,643.88
448.050	1,462.96	1,711.69
448.150	1,402.70	1,780.64
448.250	1,343.53	1,850.68
448.350	1,285.45	1,921.82
448.450	1,228.49	1,994.07
448.550	1,172.64	2,067.44
448.650	1,117.90	2,141.92
448.750	1,064.32	2,217.54
448.850	1,011.87	2,294.31
448.950	960.51	2,372.17
449.050	910.19	2,451.06
449.150	860.89	2,530.98
449.250	812.59	2,611.89
449.350	765.26	2,693.77
449.450	718.90	2,776.63
449.550	673.52	2,860.46
449.650	629.15	2,945.30
449.750	585.81	3,031.18
449.850	543.50	3,118.08
449.950	502.19	3,205.99
450.050	461.87	3,294.88
450.150	422.54	3,384.76
450.250	384.17	3,475.60

Elevation (m)	Volume over (m³)	Volume under (m³)
450.350	346.75	3,567.40
450.450	310.32	3,660.19
450.550	274.88	3,753.96
450.650	240.39	3,848.68
450.750	207.08	3,944.59
450.850	176.02	4,042.75
450.950	147.07	4,143.01
451.050	120.34	4,245.49
451.150	96.01	4,350.38
451.250	74.38	4,457.96
451.350	55.61	4,568.40
451.450	40.11	4,682.12
451.550	28.56	4,799.78
451.650	20.23	4,920.67
451.750	14.66	5,044.31
451.850	11.14	5,170.00
451.950	8.72	5,296.80
452.050	6.74	5,424.03
452.150	5.08	5,551.59
452.250	3.71	5,679.43
452.350	2.58	5,807.51
452.450	1.65	5,935.80
452.550	0.95	6,064.32
452.650	0.46	6,193.04
452.750	0.17	6,321.96
452.850	0.03	6,451.03

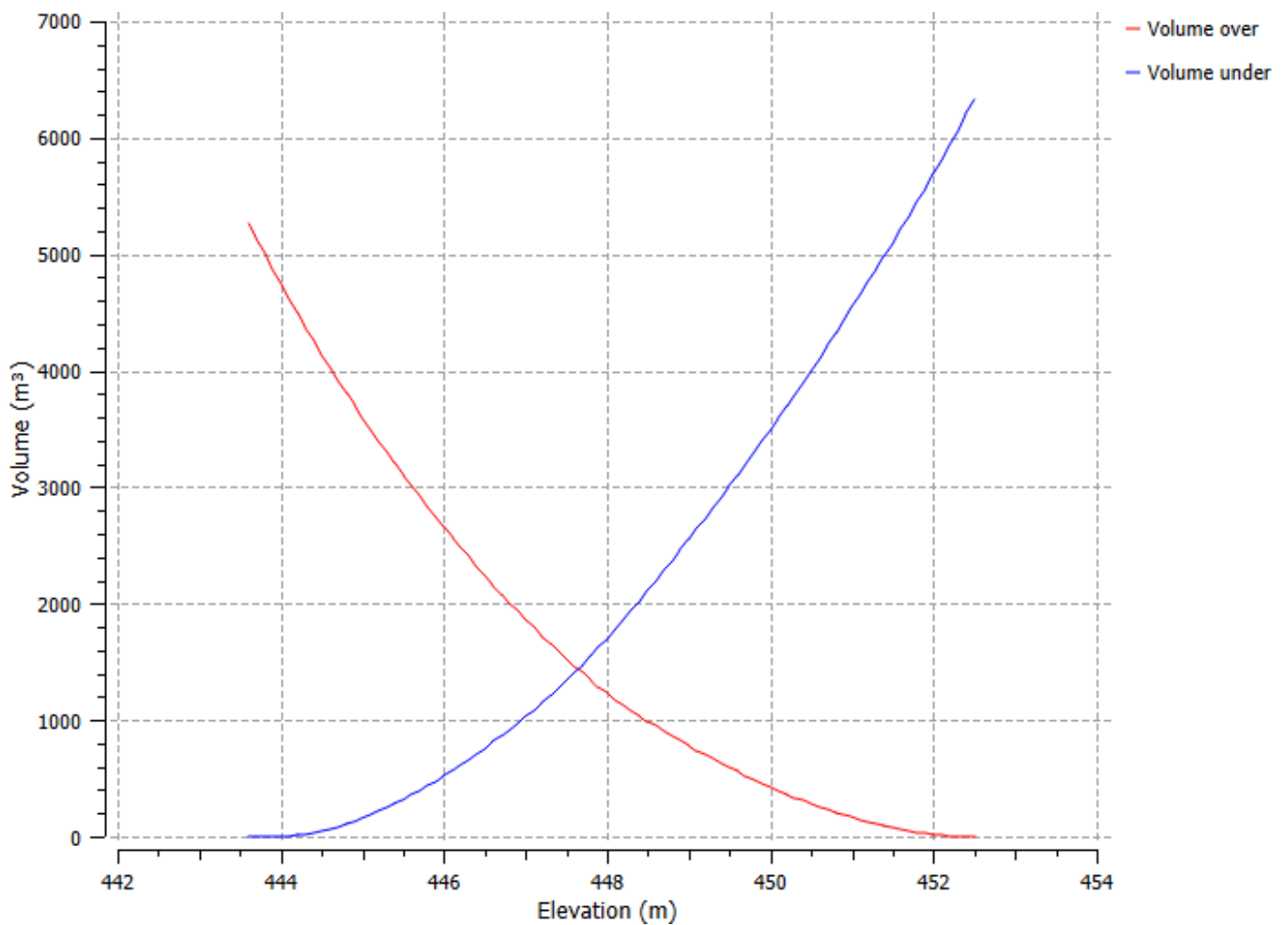


Volume from Elevation 9

Direction: X= 0 m ; Y= 0 m ; Z= 1 m



1 : 220 | 4 m





Elevation (m)	Volume over (m³)	Volume under (m³)
443.600	5,264.24	0.00
443.700	5,134.10	0.07
443.800	5,004.25	0.43
443.900	4,874.83	1.22
444.000	4,746.02	2.62
444.100	4,618.80	5.60
444.200	4,494.88	11.90
444.300	4,373.95	21.17
444.400	4,255.36	32.80
444.500	4,139.86	47.50
444.600	4,027.38	65.24
444.700	3,917.43	85.49
444.800	3,809.73	108.00
444.900	3,704.19	132.67
445.000	3,600.59	159.28
445.100	3,498.86	187.76
445.200	3,398.83	217.94
445.300	3,300.36	249.68
445.400	3,203.46	282.99
445.500	3,108.28	318.02
445.600	3,014.73	354.67
445.700	2,922.74	392.90
445.800	2,832.30	432.66
445.900	2,743.44	474.01
446.000	2,656.20	516.98
446.100	2,570.57	561.56
446.200	2,486.48	607.68
446.300	2,403.87	655.28
446.400	2,322.68	704.30
446.500	2,242.86	754.69
446.600	2,164.48	806.52
446.700	2,087.51	859.75
446.800	2,011.85	914.31
446.900	1,937.75	970.42
447.000	1,865.42	1,028.30

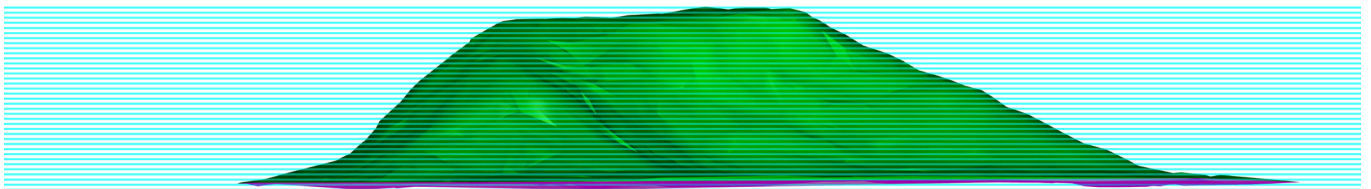
Elevation (m)	Volume over (m³)	Volume under (m³)
447.100	1,794.66	1,087.74
447.200	1,725.32	1,148.61
447.300	1,657.45	1,210.95
447.400	1,591.02	1,274.73
447.500	1,526.27	1,340.19
447.600	1,463.40	1,407.53
447.700	1,402.35	1,476.68
447.800	1,343.52	1,548.07
447.900	1,287.13	1,621.89
448.000	1,233.18	1,698.15
448.100	1,181.69	1,776.86
448.200	1,132.18	1,857.56
448.300	1,084.28	1,939.87
448.400	1,038.00	2,023.81
448.500	992.90	2,108.91
448.600	948.79	2,195.01
448.700	905.65	2,282.08
448.800	863.45	2,370.09
448.900	822.16	2,459.01
449.000	781.75	2,548.81
449.100	742.24	2,639.50
449.200	703.59	2,731.07
449.300	665.79	2,823.47
449.400	628.85	2,916.75
449.500	592.79	3,010.89
449.600	557.57	3,105.88
449.700	523.19	3,201.72
449.800	489.67	3,298.40
449.900	456.99	3,395.93
450.000	425.15	3,494.30
450.100	394.18	3,593.54
450.200	364.11	3,693.68
450.300	334.96	3,794.74
450.400	306.99	3,896.97
450.500	280.32	4,000.52

Elevation (m)	Volume over (m³)	Volume under (m³)
450.600	254.89	4,105.29
450.700	230.66	4,211.27
450.800	207.64	4,318.47
450.900	185.58	4,426.62
451.000	164.45	4,535.69
451.100	144.24	4,645.69
451.200	124.96	4,756.62
451.300	106.82	4,868.69
451.400	89.93	4,982.01
451.500	74.47	5,096.76
451.600	60.17	5,212.67
451.700	46.89	5,329.60
451.800	34.79	5,447.70
451.900	23.94	5,567.06
452.000	14.90	5,688.23
452.100	8.13	5,811.68
452.200	3.34	5,937.09
452.300	0.80	6,064.77
452.400	0.08	6,194.25
452.500	0.00	6,324.38

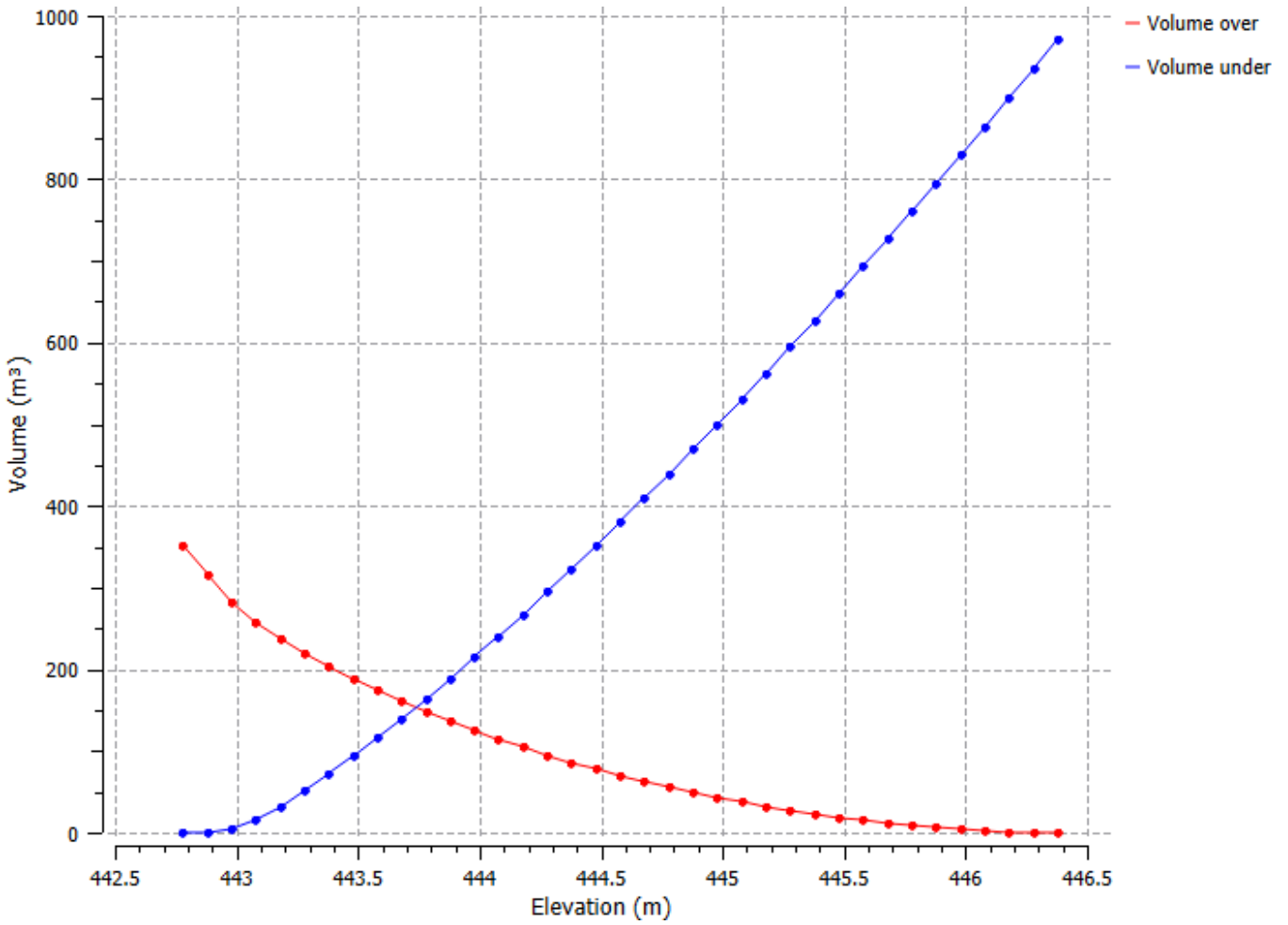


Volume from Elevation 10

Direction: X= 0 m ; Y= 0 m ; Z= 1 m



1 : 150 |—— 3 m ——|



Elevation (m)	Volume over (m³)	Volume under (m³)
442.780	352.26	0.00
442.880	315.68	0.20
442.980	282.29	3.59
443.080	256.97	15.04
443.180	237.01	31.87
443.280	219.42	51.06
443.380	203.18	71.59
443.480	188.04	93.24
443.580	173.86	115.84
443.680	160.52	139.28
443.780	147.97	163.51
443.880	136.12	188.44
443.980	124.92	214.03
444.080	114.33	240.21

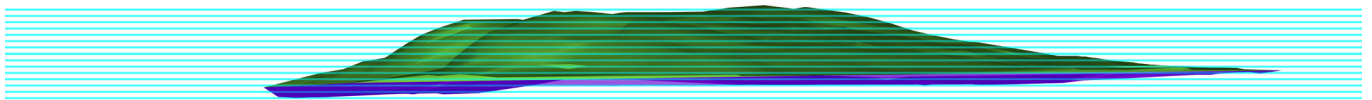
Elevation (m)	Volume over (m³)	Volume under (m³)
444.180	104.30	266.96
444.280	94.82	294.26
444.380	85.89	322.11
444.480	77.47	350.47
444.580	69.54	379.32
444.680	62.10	408.66
444.780	55.14	438.49
444.880	48.68	468.80
444.980	42.67	499.57
445.080	37.11	530.79
445.180	31.96	562.42
445.280	27.20	594.44
445.380	22.85	626.87
445.480	18.89	659.70

Elevation (m)	Volume over (m³)	Volume under (m³)
445.580	15.31	692.89
445.680	12.05	726.42
445.780	9.11	760.25
445.880	6.49	794.41
445.980	4.22	828.92
446.080	2.31	863.80
446.180	0.96	899.22
446.280	0.22	935.26
446.380	0.00	971.83

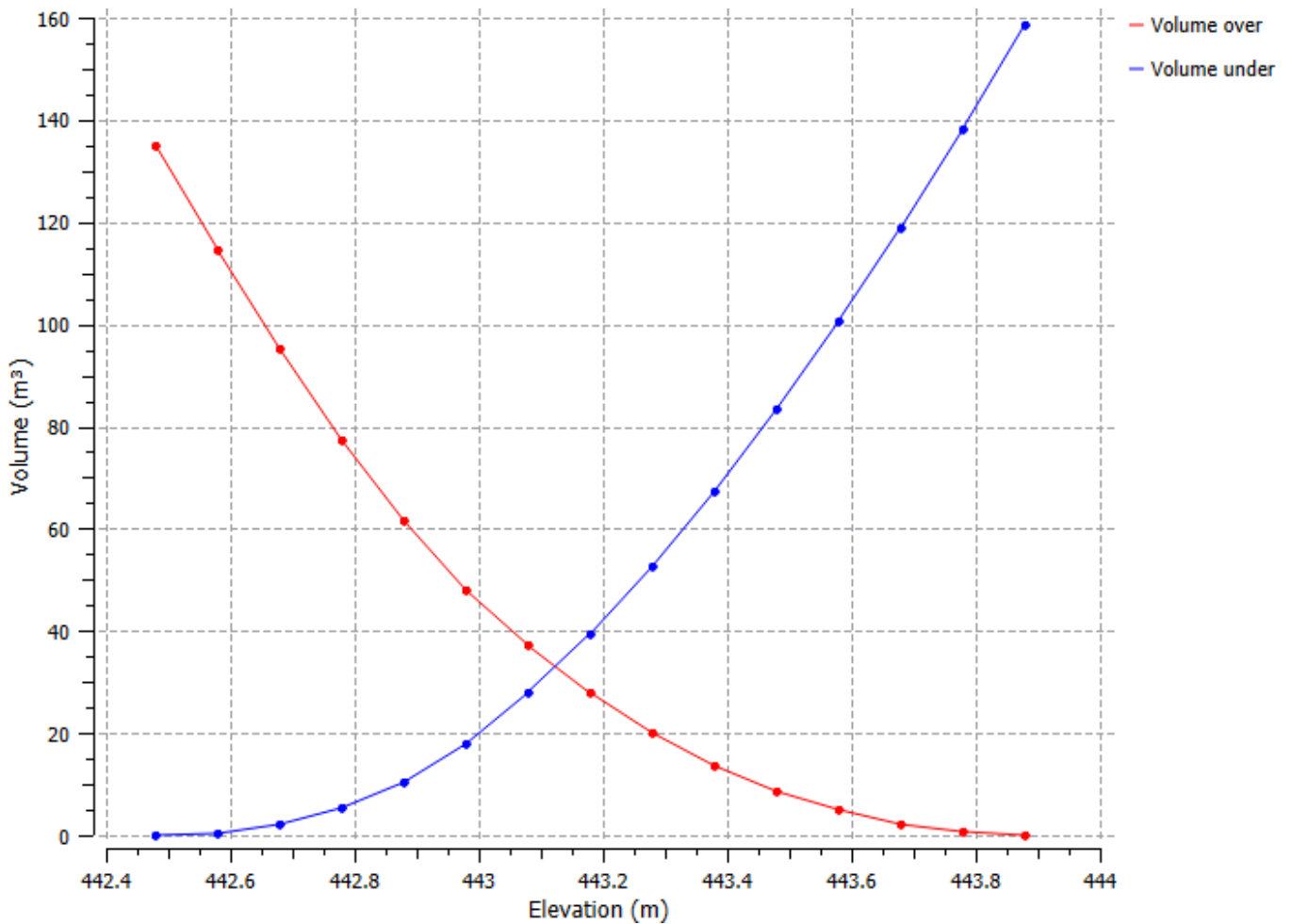


Volume from Elevation 11

Direction: X= 0 m ; Y= 0 m ; Z= 1 m



1 : 120 | 2 m





Elevation (m)	Volume over (m ³)	Volume under (m ³)
442.480	135.03	0.00
442.580	114.43	0.35
442.680	95.34	2.22
442.780	77.47	5.31
442.880	61.57	10.38
442.980	48.14	17.91
443.080	37.05	27.78
443.180	27.78	39.47
443.280	20.04	52.69
443.380	13.68	67.29
443.480	8.65	83.23
443.580	4.91	100.44
443.680	2.25	118.74
443.780	0.60	138.06
443.880	0.04	158.46